

TRANSFORMING LIVES
TRANSFORMING LIVES
TRANSFORMING LIVES
TRANSFORMING LIVES
TRANSFORMING LIVES
TRANSFORMING LIVES

TRANSFORMING LIVES

SIX GOALS THAT INSPIRED CHANGE

The President's Report

125th Anniversary Edition 2020–2021

ADELPHI
UNIVERSITY
NEW YORK



Dear Friends and Colleagues:

Adelphi proudly marked a number of milestones in 2020–2021. Coinciding with our University’s 125th anniversary of transforming lives, in 2021 we also concluded our community’s remarkable six-year strategic plan, *Momentum*.

In this year of continued efforts to safely and fully return to our vibrant campus, we took time to celebrate the milestone of 125 years and to review our many successes of the last six years. Then the Adelphi community also began working together to develop our next five-year strategic plan, *Momentum 2: 2022–2027*.

It’s a terrific time at Adelphi University as we look back at our impressive history and move full steam ahead toward our future—building tomorrow together. The 2020–2021 President’s Report honors Adelphi’s real-life impact on our students’ success, the lives of our faculty and staff, our significant place in higher education, and the strength of our University.

- ✓ Through the innovative ways we transform lives at Adelphi, we continue expanding opportunity, accessibility and the potential of higher education.
- ✓ As we intentionally elevate important work in diversity, equity, inclusion and belonging, we are leading by example.
- ✓ We become prouder each day to reconnect with more of our 118,000 living alumni.
- ✓ And Adelphi is honored to be an integral contributor to the goals and success of our state’s and our region’s businesses, nonprofits, government and local community.

Each year, as we put this report together, I’m amazed by the collective accomplishments of our students, faculty and staff. This year is no exception, and seeing the fruits of our six-year *Momentum* plan makes the impact so much stronger.

While we mark the milestone of becoming Long Island’s first private, coeducational institution of higher education 125 years ago, we are energized. We are writing our next chapter to build upon Adelphi’s history and success.

I hope you enjoy reading about Adelphi’s growth and success through the 2020–2021 academic year. Together with our community, I am proud to share it with you.

All the best,

Christine M. Riordan, PhD
President

“
It’s a terrific time at
Adelphi University
as we look back
at our impressive
history and move
full steam ahead
toward our future—
building tomorrow
together.”

Momentum:

The Strategic Plan for Adelphi University, 2015–2021

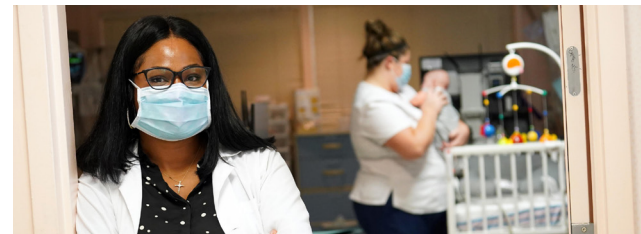
Goal 1:

**Create a World-Class
Academic Experience**



Goal 2:

**Be Relentlessly Dedicated
to Student Success**



Goal 3:

**Establish Adelphi as a Model
of Diversity and Inclusion**



Goal 4:

**Develop a Powerfully
Connected University**



Goal 5:

**Advance Our Financial
Strength and Operational
Excellence**



Goal 6:

**Become a Well-Known and
Widely Recognized University**



The final year of our strategic plan, **Momentum**

Six years of transforming students' lives—and our University

Adelphi's progress and future were recharted by our strategic plan, Momentum. Our aspiration to be a widely known modern metropolitan university is being realized.

In 2015, President Christine M. Riordan launched an extensive listening tour to gather University-wide feedback to plan the future of Adelphi. Eight working groups and our leadership identified six transformational strategic goals. Now, six years later, we have reached the conclusion of our strategic plan, *Momentum*. And our detailed monthly tracking shows measurable—even extraordinary—progress. We are stronger, smarter and better prepared for the future. Here are some highlights.

- We launched 52 new academic degree and certificate programs over the last six years.
- \$70,750 is the average annual salary of our 2020 baccalaureate grads—that's 28 percent higher than the national average.
- 93 percent of our 2020 baccalaureate and master's degree graduates say Adelphi University increased their intellectual curiosity, ability and potential.
- Our Office of Diversity, Equity and Inclusion is a critical component of our leadership, working to ensure Adelphi is welcoming, safe and respectful of our diverse community.
- Our executive and board leadership are more diverse than ever—43 percent nonwhite and 57 percent women.
- Exceptional hands-on learning is now a hallmark of an Adelphi education. We have extensively expanded our annual Scholarship and Creative Research Conference and launched our Innovation Center and the Willumstad Winning Edge program, among other advances in experiential learning.
- We reimagined and renovated our 50-year-old Ruth S. Harley University Center, expanding our main campus hub to 110,000 square feet and adding state-of-the-art amenities. The \$50 million project maximized the use of green and sustainable building materials and was completed during the COVID-19 pandemic.
- *Momentum's* focus on operational excellence and financial strength ensured that Adelphi weathered the COVID-19 pandemic with strength and security. Our Standard & Poor's rating of A- with a stable outlook was reaffirmed at a time when close to 40 percent of universities were downgraded. And our campus and centers safely reopened in Fall 2020 and stayed open with infection rates holding well below 3 percent.

Momentum guided Adelphi through six years of growth and change. With established strength, accomplishment and growth, we have begun 2022 with a new five-year strategic plan, *Momentum 2*.

Small classes and
personalized attention



Create a World-Class Academic Experience

GOAL

1

Goal 1 focuses on our uniquely transformational and intellectually rigorous educational experience—online and on campus. Our outstanding students are taught by world-class scholars in small classes. Academics are enriched by high-impact research and creative work in exceptional degree programs. Our University’s core values include a commitment to community engagement and global awareness.

Our key to delivering a world-class academic experience is meeting students’ needs and offering meaningful pathways to success.

This year, we recognized a need for new, in-demand degrees and launched three new bachelor’s degree programs.

The new BS in Health Sciences is an interdisciplinary major that advances our reputation as a premier university for health and wellness. “The BS in Health Sciences was

designed to develop students into multidimensional thinkers who are well prepared to follow any health-related career path,” said Andrea Ward, PhD, associate dean for student success and strategic initiatives. Students are prepared to participate in research and gain a deep understanding of cultural diversity.

The new BS in Languages and Cultures reflects one of Adelphi’s core values by helping students develop global awareness and understanding.

Students study two languages and explore cultural differences to help support success in today’s global economy. They also attend conferences at the United Nations to expand intercultural competence.

Our growing suite of internationally focused academic offerings is enhanced by the new BA in International Relations. With a focus on global politics, students prepare for a career in international law, diplomacy, advocacy or public policy. Students gain hands-on experience at the United Nations or with international organizations.

For students who can’t dedicate the time or resources required for a master’s degree in business, Adelphi’s Robert B. Willumstad School of Business now offers **three advanced certificates in business**. Programs in management, marketing analytics and business analytics each offer career-boosting advantages to nontraditional students who **value this access to life-changing learning**.

The first of its kind in the United States, our School of Social Work now offers a new Postgraduate Certificate in Environmental Justice for Social Workers. The program will help today’s social work professionals address the effects of climate change on the most vulnerable populations. And in our Department of Music, **young musicians can now concentrate their studies** in an expanding number of areas, including piano performance, instrumental performance and jazz studies.

Highly motivated business students can save a full year of time and tuition in our new **three-year degree program. Students graduate with a bachelor’s degree in business on an accelerated track.**

Many of our most innovative concepts are supported by generous government grants. Two prestigious awards will increase access and help alleviate shortages in teaching and behavioral health.

The Health Resources and Services Administration (HRSA) awarded our School of Social Work and College of Nursing and Public Health a four-year grant of \$480,000 a year to train 120 graduate students in behavioral healthcare. A unique new approach to health and wellness, the grant will train both nursing students and social work students to become behavioral health practitioners. “Well-trained behavioral health practitioners are integral to meeting the demand for mental health services, especially in underserved areas ... medical and mental health are intertwined and both are vital to a person’s overall well-being,” said Marissa Abram ‘08, PhD ‘17, assistant professor in the College of Nursing and Public Health.

The New York City Department of Education awarded Adelphi a \$9 million Teaching Fellows Program grant. The six-year grant will prepare an estimated 900 teaching fellows for New York City public schools. According to Xiao-lei Wang, PhD, dean of Adelphi’s College of Education and Health Sciences, “This grant will ... serve as a model for future teacher preparation.”



Willumstad School
in Germany

Remote Learning Opens New Possibilities and Partnerships

While remote learning shrinks the classroom to the small screen, it greatly expands unique opportunities for learning experiences and collaborations. The **Trans-Atlantic Virtual Exchange and Collaboration (TAVEC)** is a partnership between Adelphi's Robert B. Willumstad School of Business and Fresenius University of Applied Sciences, the largest private university in Germany. It allowed undergraduate and graduate students from the two universities to meet in virtual classrooms throughout 2020–2021 to work on joint projects. The program gave students lessons in international business, an appreciation of different approaches to problem-solving and hands-on experience with a global team. Ultimately, it provided a résumé-ready dry run for Willumstad business students entering a global, Zoom-connected world.

A Three-Year Program for Students on a Fast Track

Business today thrives on speed and efficiency. Adelphi's new **accelerated undergraduate business program** was created to help highly motivated students earn their degree in just three years, saving a year's tuition and jumping the line to great jobs or graduate school. Dedicated program advisers help each student build a personalized schedule and stay on track with their studies. Students take part in the **Willumstad Winning Edge** program to polish their résumés, practice interview skills, and gain real-world experience through internships and networking opportunities. Students interested in continuing on to earn their MBA can do that with just one additional year of study.



Willumstad
Winning Edge

A New Academic Leader

In the midst of the pandemic, Adelphi sought a **new provost and executive vice president** who deeply understands our University and would hit the ground running. The search committee found that in **Christopher Storm, PhD**. Dr. Storm has played key roles in the academic leadership of our University since 2016, most recently as senior associate provost for faculty advancement and research. He joined Adelphi as an assistant professor of mathematics in 2007, with contributions to several books on teaching and learning. Provost Storm is committed to issues relating to diverse learning styles, faculty research, higher education affordability, equity and fiscal sustainability. Marc S. Strachan '81, chair of the board of trustees, praised Dr. Storm as "an inclusive leader, scholar and champion of liberal arts and professional and interdisciplinary studies ... [who] cares deeply about the needs of our faculty, staff and students and the communities we serve."



Christopher Storm, PhD, provost
and executive vice president

3

New Bachelor's Degree Programs

Health Sciences
Languages and Cultures
International Relations

3

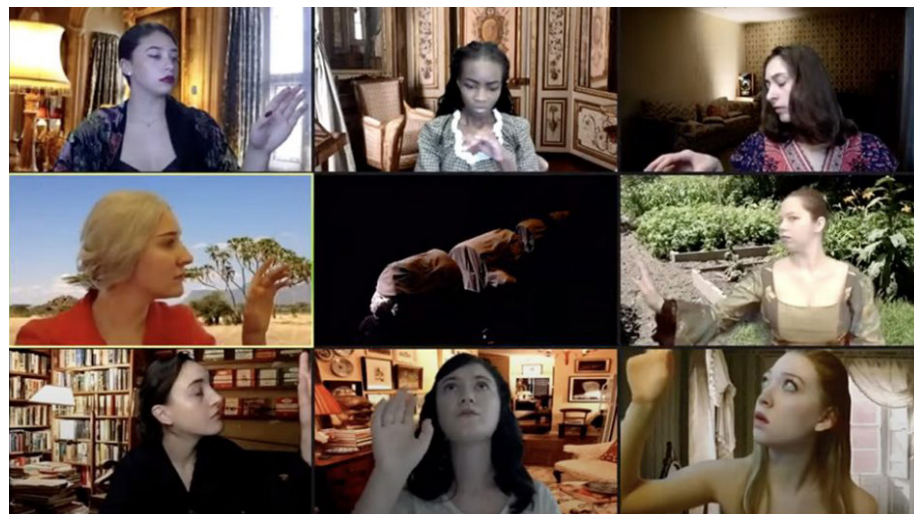
New Advanced
Certificates in Business

3

New Concentrations
in Music

1

New Postgraduate
Certificate in Environmental
Justice for Social Workers



Amid the pandemic, Adelphi performing arts students performed virtually.

Creating Award-Winning Theater, Virtually

Creating compelling theater can be a challenge in normal times. It is even more challenging during a global pandemic and public health emergency. Adelphi alumnae and performing arts students rose to the challenge when they created an award-winning new work—performed and produced entirely virtually. ***This Odd Geometry of Time*** was written by Megan Lohne '04 and directed by Shoshanah Tarkow '06 as an exploration of feminism and climate change, all in the form of a nature documentary. The unique drama debuted via livestream on YouTube in October 2020. Student actors performed alone in their homes or in studios in front of virtual backgrounds created by international student Chloe Yoo from her home in South Korea. In January, the play was chosen to appear in the **Kennedy Center American College Theater Festival**, where lead actor Haley Franke '21 won the **Musical Theater Intensive Scholarship Award**. In August 2021, the show was included in the prestigious **Edinburgh Festival Fringe**.



Taking an IBM Skills Academy class

Teaming Up With IBM

Data drives the world. The ability to understand it and use it for decision-making is critical to almost any career. That's why Adelphi's Innovation Center brought the **IBM Skills Academy** to the University with six-week online classes in data science and design thinking. The program is for students in any major and revolves around case studies from a wide range of industries. Students learn industry practices and design-thinking concepts in lectures. They gain experience in hands-on labs and collaborative group projects. Our IBM partnership will bring added Skills Academy courses for all students that focus on artificial intelligence, blockchain and the Internet of Things. IBM is just one of the many Innovation Center partners who are helping the University prepare students to be career-ready by graduation.



Nursing students in the Clinical Education and Simulation Lab

Adelphi Nursing Rises Again in the Rankings

Adelphi's College of Nursing and Public Health has long been recognized as a leader in nursing education. And the College's reputation continues to grow. Its master's degree rose 22 spots in the 2022 **U.S. News & World Report Best Grad Schools** rankings. **Niche** places the College's undergraduate program in the nation's top 15 percent and ranks it the fifth-best in the state of New York. The undergraduate program is ranked even higher in the **College Factual** rankings, sitting at No. 4 both nationally and in the state. These rankings—and the College's selection as a **Center of Excellence in Nursing Education, 2014–2024, by the National League for Nursing**—reflect the outstanding training our nursing students receive. The College has direct relationships with more than 150 community partners, including Northwell Health and NYU Langone Health. In addition to clinicals, students gain hands-on experience in Adelphi's state-of-the-art Clinical Education and Simulation Lab.

Nursing Rises in Rankings and Reputation



Graduate nursing
rises 22 spots
U.S. News & World Report
Best Grad Schools 2022

150 community partnerships
benefit students, clinicals,
training, internships
and careers

Niche Undergraduate
nursing rankings

#5 **Top 15%**
in New York nationally

College Factual Undergraduate
nursing rankings

#4 **Top 1%**
in New York nationally



Leticia Rios, CNPH
 PhD candidate

Photo Credit: Gregory A. Shemitz/NYU Langone Health

Be Relentlessly Dedicated to Student Success

GOAL

2

Our personalized approach to higher education supports each Adelphi student's unique academic goals. Intellectual curiosity, ability and potential are enriched through a mix of campus activities, service learning and countless experiential and leadership opportunities. By breaking down barriers to success and providing individualized guidance, Adelphi ensures our students are prepared to excel in their careers.

“I felt the magnitude of the support I would receive toward my success.”

—Parent-scholar and nursing PhD candidate Leticia Rios on why she chose Adelphi's College of Nursing and Public Health for her doctorate

Adelphi opened many doors this year. In our mission to improve access and reduce barriers, we achieved two important objectives: a stronger, more vibrant community and rising student success. We are unlocking access to our life-changing education for students of many ages, backgrounds, cultures and abilities.

A pivotal initiative this year was our waiver of the GPA requirement for scholarship students. This change helps support the mental well-being of scholarship students.

Adelphi recognizes that students sometimes worry they are “one bad test away from financial disaster,” according to Matthew Wright, PhD, associate professor and chair of the Department of Physics. At Adelphi, students who maintain a minimum GPA of at least 2.0 will retain their scholarships, as opposed to needing a high, defined GPA. **Given that 70 percent of Adelphi's students receive scholarship support, this step achieves greater financial equity across the board.**

“The high GPA requirement was a stressor and a barrier that we wanted to eliminate so students could focus entirely on their studies and academic growth,” said Kristen Capezza, MBA '12, vice president of enrollment management and University communications. “Many have thanked us for removing this barrier and the added pressure.”

At Adelphi's Innovation Center, we've focused on expanding virtual internships and hands-on learning for enrolled students, as well as those taking gap years—despite the continuing pandemic. Nearly 180 students, including those majoring in history, nursing and data analytics, participated in the center's unique LIVE Classes in the fall, an initiative that links students to businesses virtually.

The Innovation Center also designed projects with new nonprofit partners, including the American Cancer Society and the Brooklyn Chamber of Commerce. And our new summer internships in the Robert B. Willumstad School of Business are providing hands-on career

learning. One of these students was Phuong Pham, MBA '19, MS '20. About her internship with Bayside Brewery, she told *The Garden City News*, **“I think the program has improved my leadership, analytical, organizational and time management skills and has helped me learn more about my field, which is supply chain.”**

Adult and nontraditional students are also a priority in Adelphi's mission for access. **This past year, Adelphi introduced a large suite of continuing education programs to help students of all ages advance their careers.** More than 60 new workshops allow students to gain new career skills and strengthen their résumés.

Leticia Rios exemplifies our mission for expanded access. A College of Nursing and Public Health PhD candidate who is also raising a 6-year-old daughter, Rios was named national Working Mother of the Year by *Working Mother* magazine in September 2020. She said, “From my initial meeting with Dr. Patricia Donohue-Porter [MS '78, PhD '87], I felt the magnitude of the support I would receive toward my success ... I've witnessed the University's many efforts toward inclusion and diversity that I have never seen [elsewhere] and it makes me feel safe, accepted and celebrated as a woman of color.” While earning her PhD, Rios has helped more than 120 nurses improve patient outcomes.

Adelphi is also opening new doors to community college students. The new Nassau-Adelphi Gateway program is a first of its kind on Long Island and one of only a few in the nation. Local students take advantage of affordable tuition at Nassau Community College while living and dining on Adelphi's campus and enjoying our clubs, recreation and student life. After two years, students can seamlessly transfer to Adelphi to complete their four-year degree. **This goes hand-in-hand with how we are smoothing the path to a graduate degree for neighboring state college students.** During the past year, we launched a partnership with Farmingdale State College that guarantees its graduates admission to Adelphi master's degree programs in business analytics, computer science, general psychology and sport management.

New initiatives and strong outcomes are at the core of exceptional student success at Adelphi.



Nurse practitioner students at work



Fall 2020:
100%
first-time pass rate
for the first cohort
that took the
**Psychiatric–Mental Health
Nurse Practitioner board
certification exam**

American Nurses Credentialing
Center (ANCC)

Nurse Practitioners Ace the Test

When Adelphi launched its psychiatric-mental health nurse practitioner graduate program in 2018, we began successfully preparing outstanding students to become licensed primary psychiatric and mental health caregivers. Little did we know that our first cohort of graduates to take the **ANCC Psychiatric–Mental Health Nurse Practitioner board certification exam** would achieve a **100 percent first-time pass rate**. It was a remarkable achievement in the Fall 2020 semester, given the challenges these students faced due to the pandemic. The program was created in response to the growing demand for skilled psychiatric-mental health nurse practitioners and is for nurses who have a master's degree and certification as a nurse practitioner. Graduates who pass the exam are licensed to work with patients and their families, making psychiatric diagnoses and providing critically needed psychopharmacology, counseling and therapy interventions.



Advancing a Career—Online

Like most career fields, nursing is being transformed by technology. Today's nurses are turning to programs like Adelphi's **online master's degree in healthcare informatics** to pick up the advanced skills they need. Many, like Adelphi student **Josephine Briones**, are registered nurses who work 12-hour shifts and require flexibility for their studies. Briones works a night shift in a trauma ICU and chose Adelphi for our reputation and options. She is a part-time student on her days off, taking classes such as computer applications for healthcare management, health analytics and natural language processing, and telemedicine and digital health. With her new degree, she will be bringing state-of-the-art data collection and healthcare communications into her work. "At our hospital, different departments use different programs ... and sometimes there's a breakdown in communication. There's a lot of improvement that can be done to streamline this."

95%
of our full-time
undergraduate students
receive financial aid

A Student-Athlete Who's One in a Thousand

Every year, *Diverse: Issues in Higher Education* receives almost 1,000 nominations for its Arthur Ashe Jr. Male Athlete of the Year Award. The honor recognizes students of color who have excelled in the classroom and on the athletic field. In 2020–2021, Adelphi soccer star **Paolo Marciano '21** became only the second Panther ever selected as a finalist for the award. He was ultimately named second runner-up as well as the individual sport winner for men's soccer. A management major with a 3.80 cumulative grade point average, he has been recognized as a CoSIDA Academic All-America honoree and a recipient of the NE10 Sport Excellence Award. On the field, Marciano has won NE10 Player and ECAC Offensive Player of the Year honors, as well as the NE10 and ECAC Rookie of the Year awards. He has also been honored as the program's sixth United Soccer Coaches First Team All-American. Marciano returned for the Fall 2021 season.



Panthers soccer team forward
Paolo Marciano (No. 7)



Adelphi Junior Is New York's BSW Student of the Year

Resilient. Persistent. Committed. Those are words that describe **Jessica Karim**. The daughter of immigrants and a first-generation college student, she is also the 2021 BSW Student of the Year, an honor given by the New York State Chapter of the National Association of Social Workers to an undergraduate committed to making a difference in the lives of others. Karim has overcome struggles to achieve her successes. She was born prematurely and is blind—she uses assistive software to navigate Adelphi's campus. She also grew up with parents who struggle with English and has been an advocate for them as well as for her own needs. "I'm able to connect with clients because I understand what it's like to struggle," she said. "I know what it's like to not be taken seriously, to struggle to be heard and to fight to be seen as valuable." After graduating with her bachelor's degree, Karim plans to earn her MSW and continue her career in social work.

12:1

student-to-faculty ratio for a personalized approach to learning



Top scholar-athletes: 2019 women's lacrosse, No. 16, Alison Johnson '20, MA '21

Adelphi Athletes Star in the Classroom Too

Winners of 17 NCAA Division II titles, Adelphi student-athletes have an illustrious history on the field. Their work in the classroom is championship-level too. The Panthers have taken the academic top spot in the Northeast-10 Conference in eight of the past 11 semesters, most recently with their first-place finish in Fall 2020. **Eighty-nine percent of Adelphi's 390 student-athletes were named to the NE10 Academic Honor Roll** that semester, when 50 earned perfect 4.0 GPAs and the average GPA was 3.5. What powers this juggernaut? Adelphi's athletics department works hard to help student-athletes manage their time and their classwork, including the scheduling of often-mandatory group study times for teams. It's all in preparation for crossing the ultimate finish line: graduation. Adelphi wins there too. Panther student-athletes have a **92 percent graduation rate**, nearly 20 points higher than the average for all Division II schools.



Universal learning for students with disabilities

No Student Left Behind

The move to remote learning during the pandemic was a challenge for many students, especially those with disabilities. **Adelphi's Student Access Office** worked overtime during the crisis to ensure assistive technologies were available for students who need them for remote learning. The office's mission is to enhance accessibility and support at Adelphi and help faculty members incorporate captioning and transcription into their lectures. **It provides students with the notetaking software Sonocent**, which is especially helpful with less-than-ideal audio and eliminates the need for peer notetakers. It also offers text-to-speech software that reads text on computer screens aloud. "Our goal," said Brian Flatley, MS '19, associate director of the Student Access Office, "is to create a universal learning environment in which all people can achieve their full potential and succeed."

4 Recent Improvements in Student Access

Helped faculty implement captioning and transcription in lectures

Provided students with best-in-class notetakers technology

Eliminated the need for peer notetakers

Offered students text-to-speech options

A survey of our Class of 2020 shows strong outcomes for Adelphi graduates.

Average annual salary of our 2020 baccalaureate graduates

\$70,750

That's **28%**

higher than national average salary

—Adelphi University Career Outcomes Survey: Class of 2020; NACE First Destination Survey, Class of 2020

93%

of our 2020 baccalaureate graduates say Adelphi University increased their intellectual curiosity, ability and potential

—Survey respondents to the Adelphi University Career Outcomes Survey: Class of 2020



Establish Adelphi as a Model of Diversity and Inclusion

GOAL

3

Adelphi values the richness of human differences and, as such, our goal is to be a model of diversity, equity and inclusion. We will recruit and endeavor to retain a diverse community of students, faculty and staff. We will advance our values of global awareness and human dignity through an academic environment that allows all to feel welcome, acknowledged and supported.

“The Equitable Adelphi Action Team was created to respond to years of injustices in our society.”

—Teddy-Ann Miles '21, former president of Black Students United, on the formation of a student-led council to implement diversity initiatives at Adelphi

The movement for racial equity in the spring of 2020 was a moment of reckoning for colleges and universities across the country. **At Adelphi, it further inspired our strategic goals for diversity, equity and inclusion in the 2020–2021 academic year.** Two main areas are spotlighted in this report: the ways that Adelphi students stepped up to effect change, and the focus on diversity and equity at our highest levels of leadership.

It is one thing to push change from the top down; it is quite another when students step up and take the lead, working with administration to create substantive change.

The Equitable Adelphi Action Team was founded in Spring 2020 as a student-centered council to provide the University with recommended action steps and suggested strategies for how our community can address and combat racism and other forms of oppression, implicit biases and microaggressions. Teddy-Ann Miles '21, former president of Black Students United, explained, “In the height of COVID-19 and a cry for social justice, the Equitable Adelphi Action Team was created to respond to years of injustices in our society, which trickled down in every aspect of our daily lives.”

This academic year also saw **student advocates launch the Indigenous Peoples Awareness Coalition.** Sophia Powless '20, who came to Adelphi from the Onondaga Nation, and Olivia Maybee, an art major from the Seneca Nation, worked together to organize the University's first-ever events honoring

Native American Heritage Month. Together with their faculty adviser, assistant professor of anthropology Kathryn Krasinski, PhD, they hosted Indigenous artists, advocates and cultural leaders from around the United States—some in the Onondaga language. The Onondaga word for welcome, *nya weñha Sgé noñ*, was added to our Welcome Wall in the Ruth S. Harley University Center.

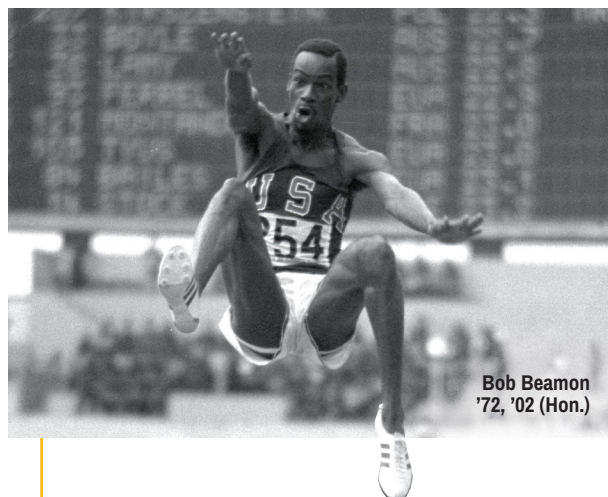
The LGBTQIA+ Empowerment Group for students and their allies launched in 2020–2021, along with the University's

first Transgender Awareness Week. Adelphi welcomed the proposal of first-year student Lauren Blake to update our main campus Pride flag to the new Progress Pride flag—demonstrating our community's support for multiple intersecting identities, as well as the progress made and yet to be made. “We want LGBTQ+ students to know that we see you, we know you, we appreciate you and we value you,” noted Scott Zotto '04, MSW '09, coordinator of substance use counseling and prevention programming at the Student Counseling Center. **In Spring 2021, Adelphi reached a perfect five-star rating from the Campus Pride Index in LGBTQ Counseling and Health, Campus Safety, and Recruitment and Retention.**

In the School of Social Work, more than 180 students pioneered new efforts to address racial justice through published op-eds, videos, pamphlets and social media campaigns. Their work focused on the effects of racism on criminal justice, health, housing inequity and the media.

Throughout this past academic year, Adelphi leaders led anti-racism efforts and made significant changes to help further dismantle systems of racism that historically exist. In all, 45 specific and concrete action plans were set in motion across our University, with timetables for completion. Leadership, faculty, staff and students logged thousands of course hours in diversity education, and 21 campuswide forums were held to raise the voices of our community members. Additionally, each Adelphi school and college launched unique diversity councils to help focus on distinct efforts among their faculty and students.

We ended the 2020–2021 academic year with the election of our most diverse group of officers on our board of trustees. Marc S. Strachan '81 became the first Black man to be chair of Adelphi's board. Carmen M. Ortiz '78, JD, '12 (Hon.), was elected as vice chair, the first Hispanic woman in this role. And Loretta Cangialosi '80 also became vice chair, increasing the growing presence of women serving on our board's leadership. **The 2020–2021 board of trustees is now the most diverse in the University's 125-year history.**



Bob Beamon
'72, '02 (Hon.)

Celebrating Black History Month

In 2021, **Adelphi expanded Black History Month programming** with events that celebrate our diverse campus and examine challenging issues of racism and prejudice receiving scrutiny in America and at colleges across the country. Coinciding with the **50th anniversary of Adelphi's African, Black and Caribbean Studies program**, events included "The Black Experience at Adelphi," a conversation on Zoom giving students, faculty and staff members the opportunity to share experiences and reflections around prejudice. Other highlights included *SCAFFOLD: Equity of Treatment*, a solo exhibition of paintings by the artist Elan Cadiz, staged in our newly renovated Ruth S. Harley University Center; the annual John Hope Franklin Distinguished Lecture, given by Duke University professor Charmaine D. Royal, PhD; and "A Giant Leap in a Time of Struggle," a conversation with alumnus and Olympic gold medalist **Bob Beamon '72, '02 (Hon.)**.

1,000+

Course enrollments
in diversity education
classes for leadership,
staff and student leaders



Marc S. Strachan '81,
first Black man elected
as Adelphi's board of
trustees chair

A New Leader for the Most Diverse Board in Adelphi History

Over the past six years, Adelphi's board of trustees has elected 19 new members, including seven women, eight people of color and seven young alumni. **In Summer 2021, the trustees voted to elevate Marc S. Strachan '81 to chair, making him the first Black man to hold that position.** A generous supporter of the University who established four multicultural scholarships in 2019, Strachan joined the board in 2017 and had served as vice chair since 2020. A former executive vice president and chief client officer at Publicis Sapient, North America, and vice president of on-premise strategy and multicultural marketing at Diageo, North America, he is chief marketing officer of Adgile Media Group and chair of ADCOLOR, an organization that celebrates and advocates diversity in the creative and technology industries. Strachan will play a leading role in the formulation and launch of Adelphi's new five-year strategic plan, *Momentum 2*.



Kirkland Vaughans,
PhD '85, recently
honored with a
Diversity Award for
Psychology

A National Award for a Leader in Diversity

Kirkland Vaughans, PhD '85, senior adjunct faculty member in the Gordon F. Derner School of Psychology, has a decades-long career as a clinical psychologist treating Black youth. He has worked with children and adolescents of color in Brooklyn's East New York section for 25 years and has spent 13 years treating Black and Latino boys in Hempstead, New York. Eight of those years have been at the Derner Hempstead Child Clinic, where, as founding director, he developed its program in community-based psychotherapy. All of his work, including more than 140 presentations to his peers, **prompted Division 39 of the American Psychological Association to honor him with its Diversity Award for Psychology** for contributions that expand knowledge and advanced issues of diversity within psychoanalytic psychology. Dr. Vaughans' longtime relationship with Derner remains strong, he said, because both are committed to providing quality services to the underserved.

A Deeper Look at Race

Adelphi extended its commitment to social justice and equity in 2020–2021 in numerous ways. One was our offering of a special online course examining the origins and historical construction of race as a concept. **Race: A Critical Perspective** looked at some of the social and political ways that categories of inclusion and exclusion are created and how they affect the behavior of individuals and groups and shape ideas of social justice and equality. The 3-credit course was taught by Carolyn Springer, PhD, associate professor of psychology. Dr. Springer, who teaches psychology courses for undergraduate, master's degree and doctoral students, serves on the Faculty of Color Task Force. She is also chair of the Human Subjects Review Committee and a member of our Faculty Senate. **In February 2021, Dr. Springer was appointed to the role of director of our 50-year-old African, Black and Caribbean Studies Program.**

Teaching Anti-Racism

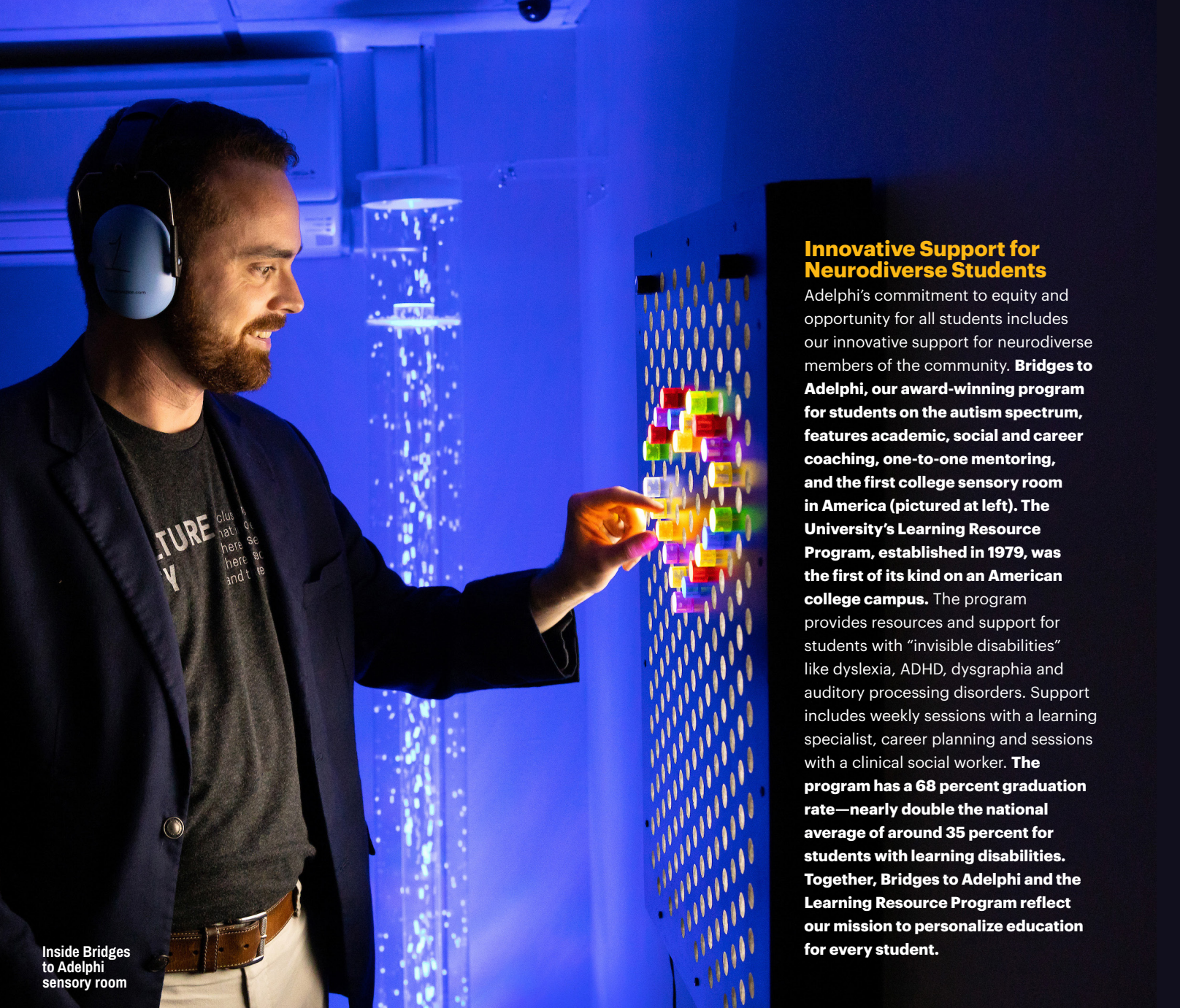
Adelphi took seriously the anguished response of our campus to the 2020 murder of George Floyd in Minneapolis. We acted swiftly and demonstrably to denounce racism and prejudice in all forms and worked intentionally and collaboratively with our students, faculty, staff and alumni to make important changes that show our commitment to be a model of diversity, equity and inclusion. Our work focused on reviewing and enhancing academic systems, hiring and promotion, student recruitment and retention, and complaint and issues reporting and resolution processes. The Office of Diversity, Equity and Inclusion launched an **anti-racism resources webpage, and every school or college at Adelphi was tasked with developing its own Diversity Council to examine, improve and report on its own diversity initiatives.**

1st
annual Transgender
Awareness Week

1st
annual First-Generation
Student Awareness Week

21
community forums
on confronting
bias and
eliminating racism

100%
of Student Activities
Board staff are trained in
diversity, inclusion
and belonging
for all



Inside Bridges to Adelphi sensory room

Innovative Support for Neurodiverse Students

Adelphi's commitment to equity and opportunity for all students includes our innovative support for neurodiverse members of the community. **Bridges to Adelphi, our award-winning program for students on the autism spectrum, features academic, social and career coaching, one-to-one mentoring, and the first college sensory room in America (pictured at left). The University's Learning Resource Program, established in 1979, was the first of its kind on an American college campus.** The program provides resources and support for students with "invisible disabilities" like dyslexia, ADHD, dysgraphia and auditory processing disorders. Support includes weekly sessions with a learning specialist, career planning and sessions with a clinical social worker. **The program has a 68 percent graduation rate—nearly double the national average of around 35 percent for students with learning disabilities. Together, Bridges to Adelphi and the Learning Resource Program reflect our mission to personalize education for every student.**

To build a more diverse, inclusive and equitable environment where every individual feels welcomed, we created:

10
New Diversity
Councils

4
Diversity
Task Forces

across our schools and colleges, libraries, athletics, and departments.

A Fourth Consecutive Newman Civic Fellow

Promoting positive change and cultivating student leadership are central to Adelphi's mission. There are many ways to measure the University's success in living up to these ideals. One way is the number of students who receive Newman Civic Fellowships, a national award recognizing students who have the potential for public leadership. **Miguel Velasquez, Class of 2023, a first-generation American and first-generation college student, was our fourth consecutive fellowship winner in 2020–2021.** Majoring in history in the accelerated 4+1 Scholar Teacher Education Program, Velasquez is driven to help other first-generation college students. He has mentored 25 students, works with Spanish-speaking applicants and takes an active role in campus organizations. Velasquez is also a member of our Levermore Global Scholars program, which prepares students to be international thinkers and leaders in a changing world. We think he is destined to be one.



History major
Miguel Velasquez



Adelphi campus rendered
in Minecraft

Our Bridges to Adelphi Students Created a Minecraft Campus

It took a full year of researching and collaborating, but several computer science majors in the Bridges to Adelphi program, which serves the University's neurodiverse students, created a brilliant new version of campus: Minecraft Adelphi. (Minecraft allows the user to create virtual models in a 3D world.) When the pandemic forced hundreds of universities to close their campuses, Bridges students and their mentor, **Joseph Koehler '18, adjunct faculty in computer science, stayed connected through this experiential computer science learning project.** Students used photographs, floor plans, Google Maps and satellite views to piece together campus and rebuild it in Minecraft, allowing any user to explore the campus virtually. Koehler noted, "Adelphi students making the campus map are getting direct, hands-on game development experience. They're also learning softer skills, like working together and communicating." Eventually, Minecraft Adelphi will be offered to prospective students as an alternate—and exceptionally engaging—campus tour.

2021
INSIGHT Into
Diversity Inspiring
Program in
STEM Award

CSTEP/STEP Program
*Collegiate Science and Technology
Entry Program/Science and
Technology Entry Program*

#1
CSTEP/STEP Program
in New York state

4th
consecutive win
for Inspiring Program
in STEM

During the academic year of 2020–2021, we celebrated several landmark anniversaries for Adelphi—anniversaries that showcase our increasingly strong connections on Long Island, in the state of New York and around our nation and our world.

Foremost among them was our own 125th anniversary. Since our beginnings as a private preparatory school on Adelphi Street in Brooklyn, New York, and the granting of our Charter for Adelphi College on June 24, 1896, Adelphi has evolved into a major metropolitan university with an inspiring and strong community.

Throughout our 125-year history, Adelphi has evolved and transformed as our communities have, creating needed new programs, forging new alliances and shifting to reflect the new realities of our changing world. In 1938, we launched one of the **first dance departments at an American university**. Today we maintain close ties with the Paul Taylor and Martha Graham dance companies. In 1951, Adelphi founded the **first professional school of psychology at a university**. Now a **U.S. News & World Report Best Graduate Program in Clinical Psychology**, we provide critical services in our region through clinics in Garden City, Manhattan and Hempstead, New York.

The first Learning Resource Program for higher education students with learning disabilities began in 1979 at Adelphi, created with the guidance of Long Island's disability community. Even more recently, our **partnership with the renowned Brookhaven National Laboratory** led to a minor in scientific computing—the first in New York state.

Another anniversary was marked this year: the **10th anniversary of our 10 Under 10 Young Alumni Recognition Program**, celebrating our graduates who have excelled and made a difference in the world within 10 years of graduation. Since 2011, 100 remarkable graduates have been honored for leading corporations and nonprofit organizations and making their mark in the arts, government and healthcare. 10 Under 10 honoree Omar Grant '03, co-president of Roc Nation, a record label

and entertainment company founded by Jay-Z, credits his business education at Adelphi with preparing him for success. "Having a strong background in business in this field is huge," he said. "I feel like I have a leg up on the competition—the A&Rs who haven't had that college experience that I had."

Two anniversaries commemorate Adelphi's historic and long-standing collaboration with the United Nations: the 75th anniversary of the international organization itself, and 10th anniversary of the United Nations Academic Impact (UNAI) initiative, of which Adelphi was a founding member. The UNAI is a global initiative for institutions of higher education with the United Nations. Through the program, our students and faculty participate in work that supports human rights, literacy, sustainability and conflict resolution. As part of the UNAI mission, **Adelphi hosts an annual campuswide conference on peace and human rights**. This past year, Adelphi students and alumni had the outstanding experience of performing **A Concert for the Future We Want, hosted virtually during the COVID-19 pandemic on the UN website**.

Saira Amar, an international relations major and Adelphi Levermore Global Scholar, spoke at the UN concert about her experience as a youth representative. "This is the room where it happens—where businesses, nongovernmental organizations and nation-states come together to discuss and solve world problems. To this day, it still brings me immense joy whenever I'm in the building—that I, as a student, can be part of the bigger picture that is civil society and make an impact." **Adelphi's prestigious Levermore Global Scholars program, celebrating its 15th year, focuses on one of our six core values: global awareness and diversity.**

The Adelphi NY Statewide Breast Cancer Hotline & Support Program, founded at Adelphi's School of Social Work, celebrated its 40th anniversary this year. Answering phone calls from patients, survivors and their loved ones, the dedicated hotline team provides resources and guidance in both English and Spanish. Serving a critical need in New York state, it has given individuals across the country a place to talk about how breast cancer has changed their lives, helping them find support and hope for the road ahead.



At the United Nations General Assembly (#UNGA) in New York

Develop a Powerfully Connected University

Adelphi's fourth strategic goal focuses on our powerful network and leverages the strength of our region and proximity to New York City. We nurture and benefit from strong connections among our faculty, staff, students, families, alumni and friends. We will remain a vital institution on Long Island and cultivate strong partnerships with local, regional and national institutions and government agencies.

GOAL 4



A Healthcare Hero

Adelphi's College of Nursing and Public Health stood out during the COVID-19 pandemic, with faculty and students at the front lines and renowned experts providing authoritative guidance to the University and communities worldwide. **The College's contributions to the health of Long Island are recognized—U.S. News & World Report** ranks it a Best Graduate School and the National League of Nursing has named it a Center of Excellence in Nursing Education. Under the deanship of Elaine Smith '78, MS '88, EdD, the College continued to provide state-of-the-art training to nurses in the rapidly changing world of healthcare. New in-demand programs include a **master's degree in psychiatric-mental health nursing** and a **doctorate in nursing**. The College has also placed new emphasis on informatics, interprofessional collaboration, and rehabilitative and palliative care. For her support of quality care, **Dean Smith was honored as a Healthcare Hero by outlets on Long Island and in New York City.**



Support for Local Schools

When we undertook the **2020 renovation of our main campus University Center (UC), named for Adelphi Hall of Fame member and Dean Emerita Ruth S. Harley**, our community relied on a temporary dining hall for about 18 months. Upon the reopening of our UC in January 2021, Adelphi no longer needed the dining hall furnishings—but we knew local schools did. Our University **donated 46 tables and 158 chairs to the nearby Hempstead Union Free School District**. The gift was just one of the many ways the University supports Hempstead's schools and residents. Another is through the services of **our Derner Hempstead Child Clinic, which provides free and low-cost mental health services to children and families**. Additionally, our **Institute for Parenting** helps parents of children birth to 5 years old provide a nurturing, developmentally appropriate environment. And the **Hy Weinberg Center for Communication Disorders** provides speech, language and hearing evaluations and therapy to Hempstead residents of all ages.

**15th anniversary of our prestigious
Levermore Global Scholars program**

265
graduates since 2006

4
pillars of learning

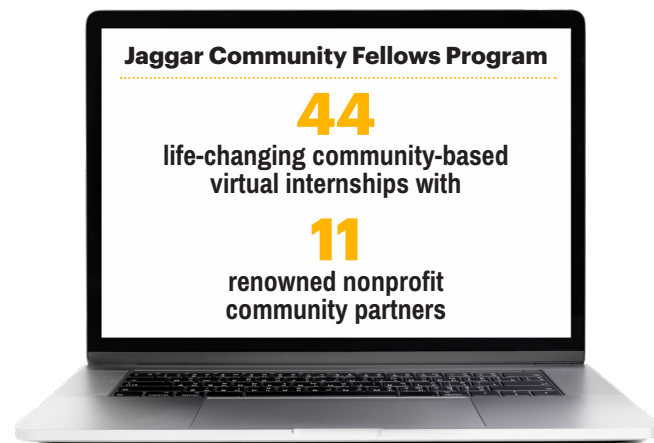
1. 21st-century leadership
2. Global engagement
3. Community service
4. Academic excellence



Inside Adelphi's Innovation Center

Businesses in the Classroom

World-class partnerships are the business of **Adelphi's Innovation Center**. Since its launch in early 2020, the center has developed **relationships with more than 50 top-notch nonprofits and companies** to provide hands-on experiences where students collaborate on projects. Our **LIVE Classes** are videoconferences with professionals who ask the students to help solve an organization's real-world challenges. Students then learn to apply the concepts they've studied in class. Graduate students in a business analytics class helped a ceramics manufacturer develop forecasting methods for predicting sales; others in a text analytics course developed an artificial intelligence tool to improve customer service. And LIVE Classes aren't just for business courses—students in history, French and Spanish, math, education, and nursing courses have participated. These students will be polished and career-ready when they graduate—our goal for every Adelphi student.



Connecting With Community, Virtually

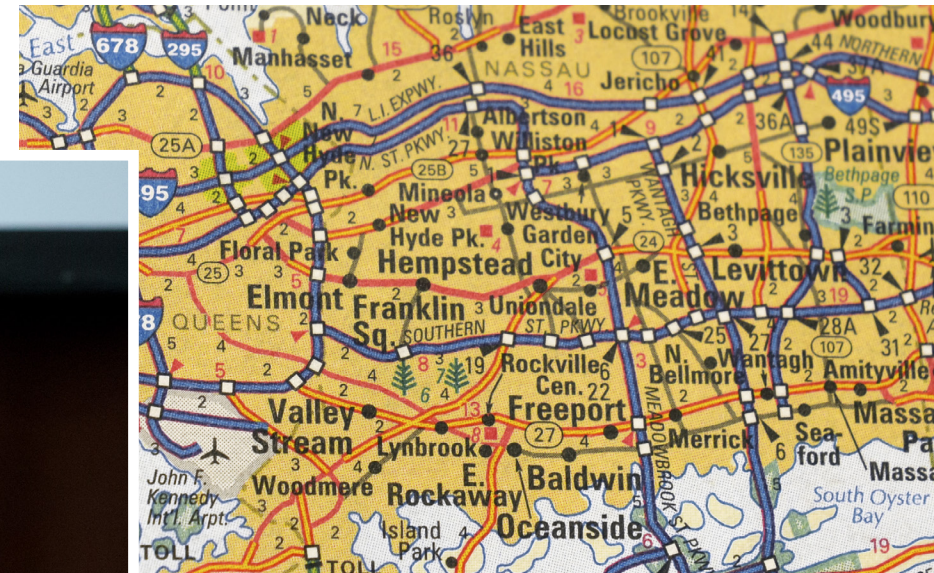
Since service-learning projects, internships and experiential learning are all essential parts of the Adelphi experience, our students continued to play vital roles in our local community during the COVID-19 pandemic. The University's prestigious **Jaggar Community Fellows Program**, which places outstanding students in paid summer internships at nonprofits, offered 10-week virtual internships at 11 organizations to 44 students in 2020. **The Robert B. Willumstad School of Business** developed remote for-credit internships for its students in the summer and throughout the school year. Adelphi's **Center for Career and Professional Development** was instrumental in securing virtual internships for many of our students. And, true to its name, the Innovation Center created a unique **Gap Year Experience** to give unenrolled students the opportunity to earn credits and develop or maintain their skills during the uncertainty of the public health crisis. The 11-week career-immersion curriculum focused on problem-solving skills, team-building abilities and digital prowess by serving on consulting projects for local companies.

10th Anniversary
of our 10 Under 10 Young
Alumni Recognition Program
honoring the achievements of
100
exceptional alumni



Economist, Teacher, Humanitarian

Associate professor of finance and economics **David Machlis, PhD**, is one of Adelphi's most popular professors. He is known for his entertaining classroom instruction and his vow to "never lecture." Dr. Machlis is also **globally recognized for his work combating intolerance as co-founder and vice chairman of the International March of the Living**. The organization has brought hundreds of thousands of students from all religions to Holocaust sites to explore the roots of prejudice and hatred. "The Holocaust is not a Jewish issue—it is a universal issue," he insists. "We must learn from the past so that a more tolerant and just society evolves for the betterment of all humankind." At the University's President's Gala in June 2021, **Dr. Machlis was presented with our inaugural President's Humanitarian Award**. Also at the gala, we launched **the David Machlis Diversity, Equity and Inclusion Fund**, an endowment in his name to combat hatred, intolerance, antisemitism and systemic racism.



Helping Local Communities Respond to COVID-19

As local governments across New York worked to assess and address the economic and social damage caused by COVID-19, Adelphi also stepped in to assist underserved communities. Kirkland Vaughans, PhD '85, clinical director and supervisor of the Derner Hempstead Child Clinic, and Philip Rozario, PhD, associate dean of the School of Social Work, partnered with New York District 18 Assemblywoman Taylor Darling. Together they created a survey for residents of six local communities (Hempstead, West Hempstead, Uniondale, Roosevelt, Lakeview and Freeport) to identify the wide range of issues facing families. **The District 18 COVID-19 Survey probed the pandemic's impact on mental health, education, vaccine hesitancy and parenting**. It was presented in English, Spanish and Haitian Creole. The survey results are helping local and state leaders improve services to the underserved.



Great Conversations with leading alumni

Talk of the Town

Adelphi's location just 23 miles from New York City is one of our great strengths—bringing all the opportunity of one of the world's greatest cities to our students' doorstep. Now we also bring some of the world's greatest luminaries to Adelphi with two new event series, **Great Minds, Great Conversations** and **Great Books, Great Conversations**. Launched in Fall 2020, these events are **vital and vibrant discussions with alumni who are at the top of their fields**. To date, they have included top executives at Bridge Bancorp and Morgan Stanley discussing current pressures on the economy; a talk with *New York Times* business editor Ellen Pollock on the role of news reporters and corporate social responsibility; a discussion with the alumnae filmmakers of the documentary *Secrets of the Hollow: Last Disintegrated School*, about Thurgood Marshall's fight to desegregate the last segregated school in New York; and a book talk with professor emerita Martha Cooley about her novel *Buy Me Love*.

Landmark Anniversaries

125th Anniversary
of Adelphi University

75th Anniversary
of the United Nations,
our Levermore Global
Scholars partner

40th Anniversary
of the Adelphi NY
Statewide Breast
Cancer Hotline &
Support Program

10th Anniversary
of the United Nations
Academic Impact
initiative; Adelphi is a
founding member

10th Anniversary
Adelphi University 10
Under 10 Young Alumni
Recognition Program

Summers at Adelphi are generally spent preparing for the upcoming school year, but the task faced by university leaders across the country in 2020 was wholly unprecedented. Adjustments to every aspect of campus life were needed in the midst of ongoing uncertainty about the pandemic.

In a landmark accomplishment that fall, our doors stayed open until our planned Thanksgiving departure—with well below the threshold of COVID-19 cases.

Early crisis planning was critical. In Spring 2021, seven planning teams built on our foundation

of operational excellence to create **a meticulous restart plan—Restart, Recover, Reimagine.**

Dozens of leaders from across our University planned Adelphi's safe return to campus. The plan included a newly created Health and Wellness Office to oversee protocols for distancing, hygiene and mask wearing; regular testing; restrictions on large gatherings; and physical barriers and signage. Adelphi's residence halls remained open, with strict safety procedures, and classes were a mix of in person and virtual.

The average COVID-19 positivity rate through the Fall 2020 semester was just 2 percent. As the pandemic continued and authorized vaccinations rolled out in Spring 2021, we planned meaningful Commencement celebrations, including small in-person events for nearly 1,000 graduates of Adelphi's Classes of 2020 and 2021. And we remained vigilant in 2021, reopening campus fully with COVID-19 protocols extended through the new spring semester.

Despite the challenges of slowing enrollment caused by the pandemic, Adelphi was prepared. Standard & Poor's (S&P), the global financial leader, recognized our strength by reaffirming Adelphi University's rating of A- with a stable outlook. S&P reviewed many factors, including Adelphi's income, expenses, enrollment trends, contingency plans for the unexpected, and creditworthiness. While a typical year sees about 10 percent of institutions receiving a downgrade in their S&P rating, the pandemic period totaled closer to 40 percent. Our continued strong rating is especially noteworthy.

"It was a remarkable sign of our continued financial stability, given the challenges that we—and most universities—faced in 2020," said James J. Perrino, executive vice president of finance and operations. "While we still have work to do in these uncertain times, the S&P evaluation underscores the success of Adelphi's thoughtful fiscal management Our actions continue to secure our University's stability."

Approximately **\$15 million in new funding from federal and local sources** helped ease the burden on Adelphi and our students. It helped replenish lost revenues and cover COVID-related costs incurred for technology, testing, enhanced cleaning and facility air quality upgrades. And \$12.6 million from the American Rescue Plan (ARP) Act, the Coronavirus Response and Relief Supplemental Appropriations (CRRSA) Act and the Coronavirus Aid, Relief, and Economic Security (CARES) Act was awarded directly to 5,494 Adelphi students to help them stay on track with their education.

Looking to the future, Adelphi appointed an inaugural vice president of University wellness, safety and administration. A leader of emergency preparedness for the University throughout the pandemic, Gene Palma now has direct oversight of safety, emergency response and pandemic matters at Adelphi.

Through this period, we continued renovation on our Ruth S. Harley University Center. The reimaged state-of-the-art center for student life greeted our returning community in January 2021. This 18-month project doubled our amount of campus dining space, transformed our ballroom into a modern, high-tech meeting center and created a modern and beautiful centerpiece on our Garden City campus. **In keeping with our commitment to sustainability, the 50-year-old iconic building was renovated rather than rebuilt—**using mostly recycled, energy-efficient and bio-based materials. Our unneeded furnishings were donated to local schools.

For these efforts, Adelphi was awarded the **Top Education Renovation in 2021** by *Long Island Business News*. The award cites our University Center's stunning design, improved accessibility and sustainable approach.

With a firm financial footing, a stunning new University Center, and new leadership in health and wellness, Adelphi celebrates our 125th anniversary year poised for a promising future.



Outside the reimaged Ruth S. Harley University Center's main entrance

GOAL

5

Advance Our Financial Strength and Operational Excellence

With Goal 5, Adelphi pledges to be a careful steward of our University's financial resources. We unite our Adelphi family in fundraising efforts that inspire and honor the faith that students, families, donors and partners place in us. Our high-functioning and highly regarded institution is driven by excellent data and transparency, strong risk management and sustainable practices.

"While I know it has not been easy, I am proud of how we have collectively faced the immense challenges of this pandemic..."

—President Christine M. Riordan's 2020 Thanksgiving message to our community

One day to give

ADELPHI UNIVERSITY
GIVING DAY 03.31.21

A Record-Breaking Giving Day

When Adelphi launched our crowdfunding Giving Day in 2017, we knew it would grow to inspire us all. It has, attracting more donors and commitment each year. **Giving Day 2021 was outstanding, raising almost \$277,000 in 24 hours**—close to \$125,000 more than our previous record. Another record was the 1,596 generous donors who contributed to our 26 individual campaigns. Individually, they support scholarships, mentoring, sports teams, the Bridges to Adelphi program, the Learning Resource Program, the Adelphi Fund and the Adelphi NY Statewide Breast Cancer Hotline & Support Program. Together, they support our mission to transform lives. Held each year in March, our 2021 event highlighted the generosity of the Adelphi community in a most difficult year to give.

One Day to Give 2021

Nearly
\$277,000
raised by 1,596 donors
for 26 campaigns
in 24 hours

\$4.7 million
One of the largest gifts in
Adelphi University history



A Landmark Gift Supports Nursing Innovation

There are many factors that go into Adelphi's reputation as a top nursing school and a recognized Center of Excellence in Nursing Education. One is the generous support of our esteemed alumnae. No graduate has more generously helped to ensure the lasting success of our College of Nursing and Public Health than the late alumna **Betty L. Forest '47, PhD, '10 (Hon.)**. In September 2020, a bequest from Dr. Forest's estate increased her planned gift to \$4.7 million—one of the largest donations in the University's history. The bequest will grow several nursing scholarship programs established by Dr. Forest, endow the College deanship, and support an innovation fund to advance faculty research, nursing education and the world-class instruction of the College's students. "I feel strongly about nursing education, and I feel strongly about Adelphi as an institution," Dr. Forest said when she established the planned gift.



Blodgett Hall

Fall 2020 by the Numbers

2%
positivity rate (students,
faculty and staff)

5,842
COVID-19 tests
conducted

614
laptops loaned to
students and staff

13,500
masks distributed

1,112
classes held
in person

1,451
classes held
online

214
classrooms, seminar
and conference
rooms retrofitted with
lecture capture or
videoconferencing

800,210
participants in
104,812
Zoom meetings

A Green Campus

As part of its commitment to sustainability, Adelphi has only used organic means of maintaining its 75-acre campus for the past 18 years. A crucial part of our program is the ground staff's annual regular release of ladybugs to control damaging insects. Surprisingly, the supply chain issues of the COVID-19 pandemic affected ladybugs too. Since they were in short supply in Spring 2021, the University turned to a new trio of insect allies: **praying mantises** (*Tenodera aridifolia*), **green lacewings** (*Chrysoperla rufilabris*) and ominously named **assassin bugs** (*Reduviidae*). Aphids, flies and mites are the targets of remorseless assassins as well as graceful green lacewings, which also prey on leaf hoppers and caterpillars. Praying mantises snack on a long menu of insects, including crickets, beetles and grasshoppers. The troops were released in May and June to patrol the lawns and greenery of our campus, which is a registered arboretum with nearly 70 different types of trees and shrubs.



James Perrino



Graziela Fusaro

Leadership Honors

Adelphi plays a significant role on Long Island as a resource for businesses, the workforce and the economy. The region's business world recognized our leadership and Adelphi's contributions in 2021 when *Long Island Business News* bestowed three awards on us. It honored **James Perrino**, executive vice president of finance and operations, with a Business and Finance Award for his leadership, which helped the University maintain its strong Standard & Poor's rating of A- with a stable outlook. Perrino also oversaw the two-year renovation and expansion of our Ruth S. Harley University Center, which reopened in January 2021 to a **Real Estate/Architecture Award** from the magazine. And *LIBN* honored **Graziela Fusaro**, director of Adelphi's Innovation Center, with an Executive Circle Award for her vision in launching the center. Fusaro has established mutually beneficial partnerships with regional nonprofits and businesses and launched a successful for-credit Gap Year Experience for students taking the pandemic year off.

3

Awards for Business Excellence From Long Island Business News

2021 Business and Finance Award

for exemplary stewardship of Long Island's business community

James (Jim) Perrino,
Executive Vice President of Finance and Operations

2021 Executive Circle Award

for demonstrated vision and leadership

Graziela Fusaro,
Innovation Center Director

Top Education Renovation in 2021

Ruth S. Harley University Center
for design, accessibility and commitment to sustainability



New Partners, Growing Endowment

A critical part of our mission to improve finance and operations is choosing the right financial partners—partners that make us stronger and our future more secure. This year, the board of trustees appointed Goldman Sachs, a leading global investment banking, securities and investment management firm, as Adelphi University's outsourced chief investment officer. This new partnership is bringing excellent results. **Our endowment fund, on a steady upward climb since the launch of our strategic plan in 2015, grew from \$202 million to \$237.8 million this academic year alone.** "Adelphi's administration and the board recognized that the volatility in today's financial markets required a more sophisticated and active approach to managing our endowment fund," said James Perrino, executive vice president of finance and operations. "We believe that adopting this new investment model will ... provide us with a greater opportunity to maximize our investment returns."



Outside the newly renovated Ruth S. Harley University Center

GOAL

6

Become a Well-Known and Widely Recognized University

Adelphi aims to achieve worldwide recognition for our outstanding private university experience—a unique combination of rigorous academics, experiential learning and exceptional student support. We place a high value on collegiality, and the achievements of students, faculty, staff and alumni will be proudly celebrated. We will be noted increasingly in news outlets, and rising rankings will enhance our reputation.

“In our 125th anniversary year, we celebrate the people, perspectives and achievements of Adelphi’s long and distinguished history.”

As higher education continued to navigate the challenges of the pandemic in 2020–2021, Adelphi’s leadership in healthcare, the arts, mental health, teaching and crisis management was often spotlighted and recognized.

Across the country, higher education publications sought and cited the expertise of our faculty and leadership **74 percent more this year than the previous academic year.** In addition, 40 opinion pieces by our faculty members were published, many of them highlighting the innovative ways they and our community adapted to and navigated the COVID-19 pandemic.

Frequently quoted this year in *The New York Times*, *The Washington Post*, *Forbes* and more was Clinical Associate Professor K.C. Rondello, MD, our University epidemiologist. For many, including Adelphi, he has been a trusted source of COVID-19 facts and the ways we can protect one another.

Our faculty shared their expertise on a variety of critical subjects affecting us all during a uniquely challenging year. In an *Inside Higher Ed* op-ed, Matthew J. Wright, PhD, associate professor and physics department chair, offered suggestions for fellow Zoomed-out faculty. Community policing was the topic of an opinion piece in *University Business* by Ray Hughes ’82, our

Department of Public Safety and Transportation executive director. In Long Island’s *Newsday*, adjunct faculty member Bernadine Waller, MA ’10, PhD ’21, examined the “shadow pandemic” afflicting Black women in underreported partner violence. *The Chronicle of Higher Education* featured an op-ed on the growth of teletherapy by Joshua Altman, MBA ’19, PhD, associate director of our Student Counseling Center.

On other frontiers, the Adelphi family tuned in to the **2021 Grammy Awards** this year to see our Pulitzer Prize-winning University Professor Paul Moravec, DMA, honored with a nomination for his oratorio *Sanctuary Road*. And we saw Stephen Shore, EdD, clinical assistant professor, speak alongside Temple Grandin, PhD, the world’s most widely known autism advocate, in seminars in places as far-flung as Bangladesh and Qatar.

Among our numerous accolades from *U.S. News & World Report*, *INSIGHT Into Diversity*, *Colleges of Distinction*, and others, in March 2021, *College Gazette* ranked **Adelphi No. 7 on its list of the 10 Best Hidden Gem Private Universities in the US.** It cited our distinctive Levermore Global Scholars program and its ties to the United Nations, as well as our prestigious programs in psychology, education, public health and business.

As we celebrate the 125th anniversary of our founding, we’re proud to see Adelphi University’s name, leadership and world-class reputation reaching farther than ever.

Nine U.S. NEWS "BESTS"

Adelphi was in the top tier of *U.S. News & World Report* 2020 rankings



Best College

Best College
for Veterans

Best Value School

Top Performer on
Social Mobility

Best Graduate
Schools:

*Nursing Master's
Programs*

*Speech-Language
Pathology*

Clinical Psychology

Psychology

Social Work

3 Adelphi Alumni Nurses

thrilled audiences as Healthcare Heroes as the Northwell Health Nurse Choir made it to the finals of TV's *America's Got Talent*



Scan to watch the golden buzzer performance

ARTS AWARDS



Jacqueline Woodson '16 (Hon.), who majored in English at Adelphi, received a **2020 MacArthur Foundation genius grant** for "redefining children's and young adult literature" in books that "reflect the lives of Black children, teenagers and families."



To his dozens of honors, Pulitzer Prize-winning composer and University Professor Paul Moravec, DMA, added a **2021 Grammy Award** nomination for his oratorio *Sanctuary Road*.

13,789

applications for admission to
Adelphi's Class of 2025

One of the Highest Honors



for Adelphi University President
Christine M. Riordan, PhD

The Council for Advancement and Support of Education (CASE) District II **2021 Chief Executive Leadership Award** recognized her outstanding support of education and statewide leadership during the pandemic.

More Rankings



The Princeton Review

ranks Adelphi a **2021 Best College in the Northeast** and our Robert B. Willumstad School of Business a **2021 Best Business School**

6 Colleges of Distinction Awards
for outstanding student support in



Adelphi in the News

6,800

media mentions

980

faculty expert
quotes by media

40

faculty op-eds
published

74%

increase
in Adelphi's higher-ed
publication mentions

Top 50 Addiction Studies Master's Programs

The Gordon F. Derner School of Psychology MA programs in Mental Health Counseling and General Psychology—**Addiction Counselor**



“None knew her but to love her; none names her but to praise.”

—Dean Anna Harvey

The Forever Gold Giving Society

With deep gratitude, President Christine Riordan and the Panther community recognize and celebrate the special commitment and foresight of the group of alumni and friends who comprise our Forever Gold Society. By including Adelphi University in their estate planning, they contribute tens of millions of dollars in planned giving that includes bequests, charitable gift annuities, trusts or other financial commitments. Their generosity helps ensure the fulfillment of Adelphi’s mission into the future.

This special society was founded in honor of Ruth S. Harley ’24, ’50 (Hon.), dean emerita. A cherished icon of the Adelphi community whose lasting impression upon the University was summed up best by her mentor, Dean Anna Harvey, “None knew her but to love her; none names her but to praise.” As we celebrate 125 years of Adelphi, we are so grateful for Ruth’s guidance and the legacy she left behind.

Forever Gold Society Members

Anonymous (4)
Judith Ammerman
Carol A. Ammon
Phyllis and Frank Angello
Barbara C. Arnott
William and Judith Ashworth
Donna J. Austin
George Bader
Georgiana R. Baker
Sallyanne K. and Brian M. Ballweg
Lester Baltimore
Eve Mechur Blohm
William Borten and Judith* Becker Borten
Janet S. Brown
Marilyn and Tim Burton
Olaf Butchma
Katherine M. Grover and Michael J. Campbell
Loretta Cangialosi
Jean R. Blume Ceglowski
Margaret Olstad Cleary
Estelle and Mark Clements
Robert L. DeCarlo
Judith De Felice
Thomas DeRosa
Robert Dunhill
Diana M. Feige
Sylvia Kleiman Fields
Steven N. Fischer
Judith Loewenstern Fishman
Carolyn Bordini Flapan
Eileen Barry Flood
Beverly J. Fraser
Lewis S. Friedman
Leonard J. Garigliano
Richard K. Garner
Robert A. Gianguzzi
Sheila Goldman

Michael L. Graziano
Frank and Joanne Gumper
Cleavert E. Guyton
Gloria Mertens Hager
Patricia M. Hargrove and Richard Schiming
Gerard C. Harrigan
Amy Harrison
Robert G. Hartmann
Barbara Heidecker
Erik and Sue Hendrickson
Carol Hochberg*
Monica McKeon Homer
Gayle and Harris Insler
Steven L. Isenberg
Angela M. and Scott* H. Jaggar
Martha Shupack Jantho
Mark W. Jordan
Carole Katz Fetner
Shelly Kleiman
Ann Kramer
Robin Rae Kravitz
Doris M. Kurzius
Joan MacLeer Kuster
Allan and Nanette* Larson
Ron Lawner
Jo-Ann and Ronald B. Lee
Judith W. Lev
Shariann Lewitt
Thomas* Dixon Lovely and Erna Susan Lovely
Betty Ann Kipniss MacDonald
Kevin G. Mahony
Ruth Bronfman Marcus
William and Nancy Marshall
David S. Martin
Barbara A. Michel
Barbara W. Mitchell
Sung Moon*

Mykael Goldstein Moss
Robert Muroff
Elinor L. Nacheman
Stanley F. and Jessica Norwalk
Geoffrey D. Palmer
James V. Panzarino
Dorothy Bergmann Pennington
Joel Pesapane
Leon M. Pollack
Mike Raphael
Nancy J. Rogner
Gary E. Rosenberg and Linda S. Waxman
George and Leonore Russell
Catherine Salvatore
Barbara A. Sawitsky
George J. Schmidt
Robert A. Scott and Carole Artigiani
Anthony F. Scozzafava
Paul Serrato
Esther Siegel
Joseph A. Silcott
Steven D. and Freddye Kaufman Silverman
Bill Sinski
Roxane Blumberg Spitzer
Gene Steger
Diane G. Steinbrink
Steve W. Straus
Victor Strauss
Carole Hamm Stuber and Neal Stuber
Myrna C. Thomas
Demaris E. Tisdale
Christian and Cindy L. Vaupel
Dianne M. Wamsley
Nancy J. Weill
Barbara Sprung Wilkes
Robert B. Willumstad

Thank You to Our Donors

» Benefactor (\$100,000–\$999,999)

Anonymous (1)
Betty L. Forest Revocable Trust
Mother Cabrini Health Foundation

» Steward (\$50,000–\$99,999)

Anonymous (3)
Z. Paul Akian
Akian Foundation
Angela M. Jaggar
Jovia Financial Credit Union
Estate of Mildred Loughlin Kahane

» Philanthropist (\$10,000–\$49,999)

Anonymous (4)
Karen Ali and Deighton Weekes
Allen E. & Patricia M. Murray Foundation
Thomas and Barbara Allen
Alpern Family Foundation Inc.
Frank and Phyllis Angello
AU Lax Alumni
The Ayco Charitable Foundation
Jeffrey and LeeAnn Black
Ingrid L. Bloomfield
Loretta V. Cangialosi
Castagna Realty Company
Bernard E. Clair
Coston Crouse Survivors Trust
Cullen and Dykman LLP
Thomas J. Donohue
The Donohue Family Foundation
Fidelity Charitable Gift Foundation
Follett Corporation
Richard K. Garner
Goldman Sachs Philanthropy Fund
Suhit Gupta
Hyman & Marjorie Weinberg Foundation
Intelli-Tec Security Services LLC
Martin B. Jaffe
Jeff Hunter Charitable Trust
JP Morgan Charitable Giving Fund
Junior Coalition of Manhasset Women's
Coalition Against Breast Cancer

Bernard and Virginia Jurgiel
Laurence Kessler
Estate of Ruth Klapper
Lisa Beth Gerstman Foundation
Mary A. Klement
Paul and Toby Koren
Ronald B. Lee
Alexander and Victory Levi
Estate of Muriel G. Lewis
Hing-Har Lo
Long Island Community Foundation
Long Island 2 Day Walk to Fight
Breast Cancer
Martin W. Lubell
Kevin G. Mahony
Paula J. Malone
Philip H. Mark
Dennis J. McDonagh
Barbara and Gavin McElroy
Sung* and Carolyn Moon
Sylvia F. Moss
Thomas Motamed
Terrence and Mindy Murphy
Allen R. Murray
Eileen M. Murray
National Philanthropic Trust
The New York Community Trust
Dorothy and Bob Pennington
Mary Jane and Thomas Poole
Christine M. Riordan and Robert Gatewood
Richard and Barbara Riordan
RVC Blue Speaks Inc.
Paul and Angela Salerno
David and Jeanette Sandor
Lois Schlissel
Schwab Charitable Fund
Mark Silverman
Joseph Stambouly and Anita D'Amico
The Storbo Family
Helene R. Sullivan
Michael G. Swift
Switzer Foundation
Eric A. Taussig
TIAA Charitable
The U.S. Charitable Gift Trust
Vanguard Charitable
Marty and Alicia Weber
Robert S. Weinberg
Joseph and Linda Westphal

The Whiting-Turner Contracting Company
Robert B. Willumstad
Wings Foundation Inc.
Eustace S. Zevas
Frank J. Zinghini

» Patron (\$5,000–\$9,999)

Leonard C. Achan
Kamil Ali-Jackson
Carol A. Ammon
Stephen A. Anderberg
Kristen and Joseph Capezza
Joseph and Anna DeFeo
Dyson Foundation
The Episcopal Diocese of Long Island
Robert and Joy Anne Ericksen
Kathleen Esposito
Douglas K. Flynn
Paul R. Grafer and Maggie Yoon Grafer
Michael L. Graziano
Frank and Joanne Gumper
Frances S. Hilliard
Jephson Educational Trusts
Stephen B. Jones
Mark and Cynthia Jordan
Eileen Lamberti
Lindsey B. Levine
The Leviton Foundation Inc.
Long Island Thoracic Surgery, PC
David Machlis
Manhasset Women's Coalition Against
Breast Cancer
Norma I. Melendez
Susan H. Murphy
Darrah Noble
Stephen and Kelley Outcault
Geoffrey and Heidi Palmer
Manoj Pardasani
James and Carla Perrino
Plastic Surgery Foundation
Presidio Inc.
Irene A. Quarshie
Rocco's Voice for Autism
Jeffrey and Karen Rosenthal
SBI Consultants Inc.
Daniel Schiff
Kevin and Irene Sheehan
Shenker Russo & Clark LLP
Sientra FULL CIRCLE
William J. Tenet
Stephen and Wendy Weinstein
The Whitmore Group
Richard Zito
Flynn Zito Capital Management LLC

» Constituent (\$2,500–\$4,999)

Anonymous (1)
Allen M. Adleberg
Lavida R. Allen
Merlin and Elaine Alper
AmTrust Title

Asian American Psychological Association
Adelaide Backlund
Michael Barasch
Joseph and Dory Bayern
Joan E. Benn
Capital One Services LLC
Gregory and Katy Carey
John Carroll
Clear View Building Services
Com-Bell Systems Inc.
Grace M. Conway
Renaye B. Cuyler
Owen and Suzin Daly
Michael Dimitrov
Aneliya Dimitrova
Arthur M. Ekahn
Electrical Industry Board of Nassau
& Suffolk Counties
Robert and Eileen Engelke
First American Education Finance
Louis and Susan Flego
William and Camille Fuessler
Lauren M. Geloso
Gloria G. and H. Richard Grafer
The Grafer Foundation
Greek Catholic Union Lodge #151
Estate of Elsie Grime
Charlotte Matthews Harris
International Brotherhood of Electrical
Workers Local 25
JVN Systems Inc.
Alison Keller
Akhil and Priyanka Ketkar
Tomislav D. Kostadinov and Raquel Valiente
de Kostadinov
Jacquelyn L. Lendsey
LMG Strategic Communications LLC
Chris Marino
Brian D. McAuley
The McAuley Family Charitable Fund Inc.
Paul S. Miller
Curtis O. Minnis
Joyce Montague
Ivaylo V. Ninov
Greta A. Noronha
Carmen M. Ortiz
Lauren E. Pellegrino
Rosalind Perdomo-Ayala
Mary N. Perry
Joel J. Pesapane
Eric N Piper
Claudia N. Ricketts-Bowen
Ridgewood Savings Bank
Raymond Romano
Judith A. Salerno
Richard and Linda Salute
Marc S. Strachan
Michael and Christine Tiedemann
Charles G. Tolbert
Deborah Viola
Vincent W. Wang
Audrey S. Weiner
Lorene D. Wilkerson
Andrew Zang
Deborah S. Zawisza

» Fellow (\$1,000–\$2,499)

Wahiba Abu-Rass
Liz Y. Alicea-Velez
All Campus
Mohamed Aly
Richard F. Amato
American Endowment Foundation
Judith Ammerman
Frank and Michele Amoruso
Andersen Tax LLC
Christopher and Justine Armas
Jean G. Ashley
Assured Environments
Christine and Mohammed Attar
Andrew F. Atzert
Michael A. Balboni
Lester Baltimore
Joseph Battaglia
Bessemer Trust
Julie A. Bolduc
William H. Borten
Sally A. Bowman
Gregory and Sandra Bruschi
Thomas B. Buckley
Olaf and Jennifer Butchma
David A. Bythewood
Richard C. Cahn
Christian M. Campagnuolo
James A. Campbell
Ted and Diana Candella
Thomas Cantwell
Jennifer A. Cardone
Joseph F. Catalanotti
The Cedarmore Corporation
Kathryn E. Chiddo
Laurence J. Clark
Scott and Alyssa Clarke
Coach Marc Consulting LLC
Roberta G. Cohen
Maxine G. Colchamiro
Anthony Colletti
Concert Health
Thomas E. Costigan
Country Pointe Plainview HOA
Suzanne Czak
Mark S. Davis
Deloitte
Richard G. DeMuth
Christine J. DeNoia
Kenneth DeStefano
Maureen A. Devane
Michael F. Dibella
Dice Communications
Kevin J. Dieterich
Scott K. Dimig
Susan E. Dinan
Lucinda Donnelly
Emily A. Dorko and Matthew Dispensa
Downstream Manufacturing & Outfitters
Rebecca L. Drill
Judi Duveen
ENV
Steve Everett
William and Mary Faraday

Randall S. Feingold
Ronald Feingold
Janet L. Ficke
John R. Ficke
William Ficke
Fifth Avenue of Long Island Realty Associates
Gregory J. Finnican
Lisa Fleming
Charles J. Fuschillo
Judith Garczynski Fleishman
Garden City Centennial Soccer Club
Leonard J. Garigliano
Lois A. Gassmann
Erin Gayron
Henry H. Gerkens
Jean M. Gillman
Susan J. Girese
Dean and Gladys Glasser
The Glenridge Charitable Foundation
William Gliem
Andrew and Kathy Gordon
Palmina R. Grella
Triscina Grey-Ortiz
Timothy and Veronica Groth
Guiding Light Olympia Masonic
Foundation Inc.
Rakesh C. Gupta
Amelia L. Harrison
Dorothy Herman
Joshua D. Hoffman
Nikolay and Amber Iliev
Indian River Community Foundation
Harris L. and Gayle D. Insler
Steven L. Isenberg
Martha A. Jaeckle
Dennis Javer
Christine Jensen
Jewish Communal Fund
JSM Brokerage Inc.
Robert F. Keane
Christine M. Kelliher
Carol A. Kelly
Paul H. Kempkes
Judith A. Kivlen
Karen Kostroff
Michael S. Krolick
Timothy W. Kucharski
Emily L. Ladau
Robert and Angelina LaMarche
Gregory M. LaSpina
Michael L. Lazarus
Joseph A. Lebel
Wayne R. LeBlanc
Sidney and Carole Lerman
Judith W. Lev
Long Island Panhellenic
Norma J. Lopez-Eicher
Karen M. Lorentzen
Lori Kupfer Architect
James F. Lubin
Ronaldo Lyrio
The Ian Mactaggart Trust
Elizabeth M. Maher
Ann M. Mallouk
Jean E. Malone

Katherine S. Malone
Joseph W. Martini
Christopher Mauro
Michael McGowan
Ruth C. McShane
Robert J. Meekins
Robert and Robin Mendelsohn
Douglas Milo
Bruce L. Monblatt
Frank Miale and Katherin Monsour
William W. Morris
Joseph and Melissa Moscola
John P. Murphy
G. Valerie Neblett
Northern Virginia Internal Medicine Associates
David H. Nugent
William R. Nye
Gerard E. O'Connor
Lois Olmstead
Robert Otto
Edmund J.Y. Pajarillo
Margaret Pajer
Subadra Panchanadeswaran
Diane Pasatieri
Ryan T. Patterson
Paul A. Pepe
Jeffrey G. Pepper
Jeffrey G. Pepper Foundation
Hilda M. Perez
Lesley D. Perkins
Nicholas Petron and Regina Larkin-Petron
Pablo and Karol Pick
Pieland LLC
James B. Pitts
Irfan and Humera G. Qazi
Paul and Gale Quentzel
Abraham Reiss
James and Ellen Riley
Riley Family Foundation
Alice S. Ritchie
RJV Equipment
Vincent Romano
Rosemarie Ronde
Leon V. Rosenberg
Gerhard and Narges Rothermel
Philip Rozario
Richard D. Ryder
Pat Santoro
Gustave J. Scacco
Russell and Deborah Schiff
James M. Shaw
The Shilberg Foundation
Linda R. Shilberg-Aronowitz
William M. and Susan C. Shulman
Kenneth I. Siegel
Adam J. Siepiola
Laurie Simone
Michael Slater
Elaine L. Smith
Mark A. Smith
Ellen D. Spruce
Patti L. Steinmuller
The Steinmuller Family Charitable Fund
Aesthetic Plastic Surgery, PC
Evelyn M. Sweeney
The T Rowe Price Program for
Charitable Giving
Trane Service Company

Wayne A. Trumbull
Okechuku A. Wachuku
Igor Webb
Barbara M. Weisz
Carol Whalen
Christine Wiedmayer
David R. Williams
Ronan G. Wiseman
Naman Zatakia
Maryann S. Zurbuch

» **Partner Scholar
(\$500–\$999)**
Anonymous (3)
Gerald F. Abualy
Admiral Craft Equipment Corp.
William and Barbara Alesi
AM Exclusive Business Machines Inc.
Victoria Angulo
Ronaldo E. Babb
Ronald S. Bakari
Georgiana R. Baker
Bank of America Charitable Gift Fund
Jacques P. Barber
Marion E. Barbero
Stephen T. Baron
Aloma P. Bascombe
Matthew P. Bashover
Valerie Bell
Robert J. Bernstein
Shelton S. Bethea
Big Guy Foundation Inc.
Ruth S. Block
Kelly Bocchicchio
Jeanne M. Bockrath
Ellen B. Bogolub
Kenneth Bowman
Carol Ann Boyle
Marvin and Jane Brown
Joseph Bruno
Charles L. Cacciabaudo
Carolina Cambronero
Michael J. Campbell and Katherine Grover
Captus Systems
Steven G. Carnesi
Daniel A. Carter
Garrett and Jaclyn Chapman
Steven J. Cherwon
Philip J. Chester
John E. Chin
Michael S. Chun
Marilyn Citron
Alan G. Cohen
Christine A. Colan
Gil Cosenza
Robert M. Costa
Daniel J. Courain
Mike Cummings
Alfred Dandrea
Loretta Decker
Russell A. Dellonna
Helen E. Dempewolf
Deanna Dempsey
Thomas F. DeRosa
Jeff Devine

Philip DiSanto and Jill Asheld
Tom Dolan
John C. Dombrowski
John and Julia Elarde
Electrical Inspectors Inc.
Teresa Evans
Angela M. Fauci-Dunbar
Jack H. Finkenberg
Lewis and Stephanie Fishman
Paul Flamm
Robert Forrester
Robert and Frances Forrester
Esther Fortunoff
Judith A. Ginsburg
Laura Ginter
Marguerite R. Gorman
Margaret Gray
Gregory A. Greco
Joseph S. Grieco
Barry J. Gross
Mark Hablenko
Jeffrey and Jessie Hall
Richard G. Handler
Jacinth V. Hanson
Gerard C. Harrigan
Patrick J. Hayes
Patricia A. Healy
Martin and Jeanette Heistein
Adrienne I. Hendler
David Hersh
Michael S. Hirson
Lawrence Hobbie
Burnetta Howell
Kimberly C. Howell
Russell W. Huber
Alfred A. Hulse
MaryAnne M. Hyland
Violeta Ilik
Chelsea P. Imbriano
International Association for Social
Work with Groups
Arturo and Susan Iriarte
Mark O. Israel
Ives Sultan & Spike CPAs
Michael S. Jackson
Charleen T. Jacobs
Curtiss D. Jacobs
Jaclyn A. Jesberger
Jewish Community Federation
Jewish Federation of Northern New Jersey
Kathleen Johannsen
Matthew B. B. Johnson
Robert and Nancy Jones
Elenore E. Kehlenbeck
Damyn W. Kelly
Kanishka Kelshikar and Priyam Talreja
Marilyn B. Klainberg
Barbara W. Klein
Alexander Klotsche
Kurz-Kneiger Foundation Inc.
Andrew Kriegman
Lori Kupfer
Jacqueline Jones LaMon
Mark S. Landstrom
Robert and Holly Lanigan

Kevin Lanigan Memorial Foundation Inc.
Kathleen A. LaRousse
Thomas E. Lauritano
Ronnie E. Leibowitz
Donna M. Liotine
Susan P. Loughlin
Alex C. Maccaro
Reyna Machado
Fundador Maldonado
Daniel S. Markus
Raymond A. Mascolo
Marla Mayer
Daniel McCabe
Bob and MaryJean McCarthy
Joseph L. Meer
Ronald R. Metzler*
Michael Miller
Robert A. Moore
Margo Naranjo
Stalyn O. Noboa
Kenneth E. Norian
North Shore Multiple Listing Service
Northern Connecticut Lacrosse LLC
Northrop Grumman Corp Charity Trust
Frank D. Palmeri
Kathleen J. Papp
Yelena Paranyuk
Alice Jean Peltz
Yaneik Pennicott
Charles A. Perretti
Kieran K. Persaud
Simon M. Plaut
Jeremy Poock
Elvin T. Ramos
Kathleen A. Rees
Christine A. Resnick
Kathleen L. Rickard
John Rieger
Joshua A. Riggs
James and Christine Rinere
RMB Drafting Services Inc.
Michael Rollins
David Russell
Joseph C. Sambito
Vincent Samuel
Judith B. Schmidt
Dodds B. Shamroth
Pamela Shapiro
Jeffrey Siegel
Bruce and Nancy Silverman
Steven and Freddie Silverman
Margo L. Smith
Angela Solomon
Timothy M. Sonbuchner
Barbara and JC Spender
Jodie Sperico
Louise G. Stoeber
Christopher Storm
Mark M. Sultan
Tectonic Engineering & Surveying
Consultants PC.\
Joanna Templeton
Susan M. Tendy
Vincent A. Treglia
Gabriele B. Tryon

Joushia Tucker
Sandesh M. Tuladhar
Diane E. Turcic
Paul D. Tusa
Tusa & Associates CPA, PC
Beatrice A. Tusiani
Adaeze I. Udoji
Kathleen T. Ullmann
Charles and Susan Vallone
Gregory and Eva Christine Van Tatenhove
Joanne M. Ventura
Irene M. Virag
Dennis P. Walker
Andrea Ward
Thomas and Janet Ward
Alex Weinstein
Jennifer Weinstein
Richard L. & Lois S. Werner Family Foundation
William and Rosalind Wertheim
Thomas and Carly Westerman
Willie White
Barbara J. Wilkes
Mary Ellen Williams
Stephanie L. Williams
Patricia Wong-Zurowski
Jason Xu
Michael D. Zentman
Robert J. Zimmers
Patricia Zinke
Marc D. Zisselman

» **Supporter Scholar
(\$250–\$499)**

Anonymous (5)
Pawneet Abramowski
Deborah A. Ambrosio-Mawhirter
Herbert A. Anderson*
Marilyn Q. Anderson
Darryl C. Aubrey
Donna J. Austin
Regina Axelrod
Andrew S. Bailen
Lynn A. Barber
Estola M. Barnett
Ellen D. Bartley
George and Linda Bartunek
Shivan Bassaw
S. Andrew Baumbach
Aixa Beauchamp
Steven and Joan Beder
Marie D. Beninati
Stacy Bernstein
Barry P. Blank
Gary Book
Seth Bookey
Sidney Boquiren
Barbara R. Bornstein
Joy G. Borrero
Christopher D. Boyle
George W. Brady
Theresa Brady
Lisa M. Briskie
Susan Briziarelli
Brooklyn Dip LLC
Janet S. Brown
Patricia E. Brown

Dulce M. Brumfield
Ronald J. Brunozzi
Paul J. Caffrey
Edith A. Calhoun
Marcialito B. Cam
George and Susan Campbell
Michael P. Caplice
Peter Catalano
The CauseWay Agency
Chrysovalantis Charalambous
Jeffrey Chase
Denise Chiarella-Wohabe
Judith A. Christ
Steven J. Ciavarella
Elena Cicchetti
Lita Cohen Rudy
Jacqueline R. Coleman
Carol J. Comerford
Alan H. Cooper
Larry A. Cornell
Michael Cosgrove
Tara Coyle
Lauren E. Daitz
George Damilatis
Valerie Davis
Blyth W. Daylong
Wayne J. DeAngelo
Lisa L. DeCastillo
Lesley E. Decker
John and Elizabeth Dente
Francis and Eva Devine
Anthony M. DiSanto
Jean H. Dominique
Maureen Donnelly
Patricia Donohue-Porter
David Doran
Steven Dranow
Michael and Cathy Draskin
Linda Edgar
Jack Edwards
Sheila M. Edwards-Robinson
Excelsior Elevator Corp.
Newell R. Falkenburg
Lisa Fane
Andrew J. Fasano
Marie A. Fauci
Grady and Jennette Faulkner
Richard D. Feldman
Henry E. Ficke
Jane M. Fisher
Ami Fixler
Thomas Flavin
Claire Fon
Richard Fon
Patrick E. Fortune
Cathy L. Francomano
Christian A. Fundo
Graziela Fusaro
Frank J. Gallucci
Shawn M. Garber
Milssa Gavigan
Craig and Jo Gebelein
Lyn H. Geikie-Rice
Maria E. Georgiou
Henry J. Gibson
Sean Gillice
Daniel S. Gimpel
Rosalia E. Gioia
Jeanette Gisbert
Kevin Glasser

David S. Gleeson
Wendy Goldstein
Lorraine B. Gotlib
James and Lynn Gould
Jeffrey R. Greene
Ellen M. Gurnitz
Joanna Haich
Joan M. Hainsley
Isiah R. Hall
Helen O. Hansen
Margaret M. Hardie
Aaron Harper and Cecily Mitchell-Harper
Sandra L. Harris
Kevin C. Held
Regina L. Hickey
Bonnie Hirschhorn
Talona H. Holbert
Michael Holstein
Charles H. Hoppenstein
Catherine M. Hottendorf
N. Gerry House
Raymond J. Hughes
Nicholas K. Iadevaio
Diane Ialenti
Richard and Helen Ilsley
Lauren R. Iocco
Ken Jacobson
Cooper Johnson
Jeffrey L. Kalman
Kathleen M. Kane
Michael M. Kaplan
Armen Kasabian
Rita T. Kashdan
Michael Kaspar
Howard and Tina Kassinove
Harriet G. Kaufman
Jack A. Kaye
Michael and Ronnie Kelapire
Joseph and Laura Kern
Jeffrey Kessler
Susan M. Kessler
Kenneth J. King
Cathy O. Klemenger
Esther Kogan
Martin and Ruth Kornheiser
Gergana Kostova-Pehlivanova and
Veselin Pehlivanov
Charles and Catherine Kulins
Leonard and Ellen Labita
Debra A. Langendorff
Sean M. Lawless
Leslie Lawrence and Stan Barrett
Charlotte R. Le Vecque
Martin A. Lebson
Carol A. Lehmann
Arthur and Jessica Leibowitz
Susan A. Letvak
Paula Levinson
Traci Levy
Robert L. Lichtenstein
Dennis W. Lind
Robert A. Linne
Long Island Plastic Surgical Group
Diana Lopez
Shirley Lowrey
Carol A. Lucas
Patrick J. Lyons
Edison Machado
Anthony and Nardy Madera
John G. Madson
Gloria R. Maffettone
Kelly A. Mannix
Scott and Patricia Mantay
Sharon M. Manuele
Frank A. Marinelli Esq.
Arnold M. Markoe
Anitra Marley
Norman L. Maron
William and Nancy Marshall
Donna M. Martin
Harvey C. Marx
Johnnie W. Mask
Jennifer McAuliffe
Kevin McGovern
Sean McGovern
Kimberly P. McGrath
Thomas Meehan
Nehal L. Mehta
Michael and Teresa L. Mengel
Nicole Mengel
Ruth B. Merkatz
Catherine B. Mermelstein
Melissa A. Mertz
Aspasia Merza
Walter J. Meyer
Emily Miccile
Scott and Kim M. Miccile
Lily Miller
Neil T. Miller
Shirish B. Mohile
Jennifer Moldow
Diane Moser and Joseph Posillico
Patricia A. Muncy
Lisa Munier
Robert Muroff
Susan Murphy
Virginia M. Murphy
Zachary Naglieri
Peter and Diane Neyland
Helen and Roy Nicholson
Northern Trust Charitable Giving Program
Margaret Nucito
Martha Nutman
Mattias Nyitray
Albert G. Nyland
Victor T. Oliva
Cynthia Olson
Vivian Omagbemi
Tracy O'Neill
Mitchell N. Onwochei-Ashei
Brian S. O'Reilly
Maurice J. Ornstein
Kathie Ortore
Charlotte E. Overton-Moran
Liza Paglialunga
Eugene Palma
Marilyn S. Paul
Bonnie J. Perlmutter
Adam Perry
Emily Perry
Kim Perry
Janet L. Picataggio
Genevieve Picone
Deborah L. Polsene
Laura S. Porsch
Alexandra Porter
Leah M. Prestamo
Salvatore and Pamela Primeggia
Robert and Carolyn Quinn
Eva Radtke

Colleen M. Raga
Maryann Raimondi
Douglas Ranieri
Nicholas Ranieri
Brian Ray
Refinitiv
Shirley R. Robertson
Stephanie Rogall
Barbara Rollins
Frank and Cathryn Romano
Nicolas Rontanini
Jessica Roque
Marcie Rosenberg
Susan L. Rosone
Jay and Judith Roth
Ronald and Janice Roveto
Michelle R. Royce
Alida Rubenstein
Gary S. Rudolph
Michael Rutstein
Michael J. Sammis
Michael J. Schaefer
Barbara and David Schuppe
Monique M. Schwender
Anthony and Monica Scozzafava
Jennifer L. Scully
Jennifer Scully
John Shackelford
Larry Sherer
Bonnie Shurpin Muller
Jean Silano-Rettura
Harold M. Singer
Lois M. Smith
Mark L. Smith
Joan K. Smyth
Ewa Sobczynska
Scott L. Sokolow
Mary V. Spainhour
Jill & Mark Spitzer Fund of the Jewish
Community Foundation
James St. John
St. Thomas the Apostle R.C. Church
Thomas A. Stefanek
Brian Stockman
Mikhail Stoliarov
Elizabeth N. Strausman
The Strausman Family Fund Inc.
Richard G. Tami
Neil Tanna
Peter and Diane Teichmann
Linda and Arthur Tenenbaum
Cara Terzulli
Christopher V. Thornton
Monique T. Toler
Isabella Totino
Alison Turner
Andrew Turner
Paula M. Tusiani-Eng
Margaret M. Tuttle
Susan C. Vignali
Byron N. Voutsinas
Herbert and Suzanne Wallach
Cynthia Warren
John and Kathleen Watchorn
Madeline Wedemeyer
Noelle Wehmeier
Ben Weinstein
Ann Wilkinson
Gayle Williams
Curtis P. Wilson

Emily B. Wilson
Hugh Wilson and Leta Weintraub
Jennifer Win-Johnson
Maura M. Winkler
Steven W. Wolfe
Kaitlyn N. Woods
Timothy and Kelly Worstell
George and Mary Ann Wulpern
Barry T. Zeman
Jodi Zinnen-Nowak
Howard Zivotofsky
Susan A. Zori

» Friend Scholar
(\$100–\$249)

Anonymous (12)
Danny A. Abreu
George Acosta
Cynthia D. Adams
Madeleine M. Adams
Nicole D. Adams
Marilyn F. Adelberg
Adelphi Security Officers Association
Sherman Adler
Robert and Denise Affenita
Anagnostis and Argie Agelarakis
Andrea Ahearn
Keith Ahrens
Aubree A. Albano
Isabel R. Albom
Mary E. Aldridge
Robert Alexander
Tchotchovi Alipoe
Michael and Carol Alpern
Malcolm and Enid Alston
Peter M. Amari
James-Paul Amato
AmazonSmile Foundation
Ellen Ambrosino
Vincent Amodeo
Stanley C. Anderson
Katie Andrews
Beverly Araujo Dawson
Firouz Ardalan
Barbara C. Arnott
Mary Ellen Arrington
Janet Arvelo
Adam Ashe
Amanda B. Ashe
Crystal R. Ashe
William and Judith Ashworth
Pamela N. Asplund
Joseph R. Assortato
Sita Attride-Stirling
Samuel R. Aymer
Richard A. Backer
Paula E. Bacolini
Kathleen B. Bacon-Greenberg
David and Rosemary Baggish
Carl Bagnini
Joanna Banas
Aditi Bandyopadhyay
Phillip and Debra Bank
Ana Barbu
Angela M. Barbuti

Douglas P. Barnaby
Nancy Barry
Tim Basilica
Leanne M. Bateman
Daniel M. Beckerman
Sid Beebe
Michael Belfiore
Richard J. Bell
Mary T. Bellmar
Antoinette Bellomo
Brendy Lynn Belony
Linda J. Belsito
Richard Belson
Joanne H. Bentson
Dorothy A. Berdinka
Paula M. Berger
Claudia L. Berkowicz
Paul D. Berman
Chris A. Bernard
Claire E. Bernardo
Christian Bernhardt
Marcia Berrios
Michael and Elizabeth Berthel
William P. Bertolotti
Bethlyn Enterprises, Inc.
Thomas G. Bickerton
Jimmy Bifulco
Bradford L. Bigelow
Elizabeth A. Biging
Roberta S. Billman
Keren Binyaminov
Kevin Birney
Patricia Birney
Brian Bisky
Tom Bisky
Agnes I. Blackmon
Karen J. Blacksburg
Harriet I. Blank
Robert G. Blank
Jane Blazak
Jennifer Blazeovich
Joan G. Bloomberg
Hubert L. Blue
Robert S. Blume
Michael P. Boccio
Paula P. Boccio
Jamie R. Bodner
Stefni F. Bogard
Michael Bojbasa
Anthony F. Bonagura
Joanne A. Bond
Maria A. Bonich
Josephine A. Bonventre
Cristina I. Boquin
Zachary and Megan Borst
John Bourquin
Samantha Boyle
Ann Brady
David A. Brand
Christine A. Braun
Carolyn A. Braun-Mills
Renee Bresky
Barbara J. Bressler
Alfred W. Bridgeman
Rosanne E. Brienza

John Broderick
Mary Broderick
Jeffrey C. Brody
Marissa Brown
Maureen Brown
Llatetra Brown Esters
Michael and Deborah Buchanan
Carla Buonviaggio
Gerard A. Buquicchio
Fabian G. Burrell
Melanie E. Bush
Thomas and Gladys Butler
Keith Butler
Jason Byrd
Ketki Cabbil
Miriam L. Cabezas
Robyn Cacini
Barbara J. Cadogan
Charles and Stephanie Cal
Frank and Christine Califano
Andrea T. Caligiuri
Danielle Calvagno
Diane E. Cameron-Kelly
Joan P. Camisa
Linda Cammisa
Carla Campagna
Estela L. Campbell
Jessica J. Campitiello
Brianna Campmier
David M. Campmier
Frank P. Canizio
Claudia Canner
Robert Capen
Barbara N. Caplan
Brian J. Capozzi
Tiffany Capparelli
Joan M. Cappel
Frank J. Cappuccio
Linda Caputo
Rich Caracciolo
Maria E. Cardella
Virginia C. Carman
June P. Carpenter
Jennifer Carpino
Amber Carr
Derryk Carr
Craig Carson
Jeffrey B. Carstens
Linn E. Cartagena
Tania P. Carty
Florence Carucci
Vincent Carucci
Mauro Cassano
Laurence M. Cassar
James and Elizabeth Cassara
Brian M. Cassell
Courtney R. Cassella
Cassone Trailer & Container Co.
Charles M. Castelluccio
Donna Castillo
Samantha Castillo
Alfred B. Cattabiani
George J. Cavaliere
CCC Environmental Services LLC
Renae Charalab

(* deceased)
Our data covers gifts received between September 1, 2020, and August 31, 2021.

(* deceased)
Our data covers gifts received between September 1, 2020, and August 31, 2021.

Paraskevou Charalambous
Lee Chase
Stephanie Chase
Nitin Chatriniyom
Chun-Kuen Chen
Serena Z. Chen
Xiaoming Chen
Henry Chew
Victoria R. Chiesa
Dennis G. Chin
Toinette O. Chin
Nqobile B. Chitimbire
Meredith M. Chiu
Jon E. Christensen
Marlienne C. Christian
David Chu
Margaret A. Chugowski
Ann C. Churchill
Michel Ciavattone
Emily Cierley Horcher
Candace O. Cihocki
Carol E. Ciofalo
Anthony and Kristine Cipri
Alice A. Cisler
Marie Clancy
Patricia J. Clancy
Diane M. Clark
Grant Clark
Laurie Clark
Maria Clark
Judith Clarke
Shayla Clarke
Rosanne A. Clemen
Tim Clow
Barbara R. Cohen
Bruce E. Cohen
Carol S. Cohen
Jack B. Cohen
Judith H. Cohen
May Z. Cohen
Richard E. Cohen
Jane Cohen Dworkin
Jane D. Colahan
Joseph R. Colahan
Candice G. Collazo
Helen M. Collins
Joann M. Collins
Dennis and June Collison
Bridget A. Collura
Vanessa Colon
Jaclyn B. Composto
Lucille A. Composto
William J. Condron
Alice Connolly
Michael W. Conolly
Corina Constantin
Elba Contreras
Jonna Coombs
Maegan Cosgrove
Joseph R. Cotie
Richard T. Cotter
Christie L. Cotty
Christine Coughlin
Audrey Coward
Helen Coyle Bergstein

Jennifer Cramer
Susan L. Cranston
John F. Croker
George and Mary Cross
Virginia D. Cser
Nicoletta Cuccio
Candida Cucharo
Kathleen Cullen-Conway
Royal Curry
Custom D'Signs
Danielle M. Cutuli
Barbara A. Czarnecki
Belinda and William Dabney
Maureen M. Daddona
Julianne M. Daga
Yul N. Daga
Elizabeth M. Daitz
Hatice Dalton
Andrew D'Ambruoso
Martin Dank
Marsha J. Darling
Alda M. Darragh
Babette Darrigrand
Beth M. Davidson
Doreen E. Davis
Elizabeth D. Davis
Joseph C. Davis
Julie R. Davis
Maggie R. Davis
Roger H. Davis
William De Cicco
Nancy A. de Waart
Lisa M. DeAngelo-Nikovics
Chris Deatherage
Peter Debartolo
Gina S. DeBold
Steven J. DeBold
Ethel Debrew
Nathan T. DeDeo
Joyce DeFilippo
Dionne V. DeFlorimonte
Susan E. DeFrancesco
Joseph and Laurie DeGearo
Henry I. DeGeneste
Jessica M. DeJoseph
Amanda M. DelGiacco
Peter and Gail DeLuca
Emily Demace
Keri DeManigold
Barbara R. DeMilo
Christopher Demond
Christy A. Denckla
Ellen C. DeNigris
Jennifer DePass
Brooke E. DeRosa
Jeremy Derosa
Nicholas DeSantis
Carol D. Desoe
Theresa Deutsch
Ann M. Di Sibio
Josephine Dibella
Christopher J. Dickens
Linda Didio
Benedict C. Diventi
Maureen Diver

Maureen Dobert
Gail A. Dolan
Joan Tiffany Doran
Eileen Dorko
Marian Dougherty
Hugo Keesing and Marilyn Draxl
Sabrina Drazic
Danielle Dreiss
Michael S. Dubester
Gertrude R. Dudley-Grant
Deborah R. Duke
David Duke
Robert Dunhill
Alan Dustman
Aggy Duveen
Ali Duveen
Schuyler Duveen
Robert K. Earley
Eleanor Ebel
Myron Edelman
Clara Mae Edwards
George P. Edwards
Ivy M. Edwards
Susan Edwards
Tanille K. Edwards
Timothy M. Edwards
Anna Efthimiadis
Anthony Egan
Robert Eggert
J. Wade Ehlen
Barbara Ehrenpreis
Nora B. Ehrling
William and Patricia Eickelberg
Nicole Elarde
Gail H. Ellstein
Patricia Emma
Rachelle Epstein
Gustavo F. Escobar
Barry D. Faecher
Barbara Fakas
Nicol Fakas-Rizai
John G. Falcioni
Liz Falcone
Phillip J. Fallon
Christine Fardellone
Tara Fargione
John and Yvonne Farrell
Rosemary B. Farrell
Louis J. Federico
Jerome and Nancy Federlein
Michael P. Fee
Corey Fehr
Michael and Annette Feierman
Anita Anna E. Feinstein
David Feit
Theresa S. Feldman
Timothy Feliz
Sara Fennell
Mary M. Fenton
Beatrice E. Ferguson
James and Irene Ferguson
Dorothy Ferraro
Sharon M. Ferst
Andrew Festa
Fiber Control Inc.

Sylvia K. Fields
Peter and Donna Finck
Janet Fine
Laura Finfer
Alexandra R. Finger
James and Patricia Fingerroth
Arthur T. Finkel
Maureen C. Finley
Christina Fiore
Lori Fisher
Frances A. Fisher
Anne M. Fitzgibbon
Terry and Randi Flaig
Carolyn and Robert Flapan
Anna Flesch
Flexible Systems
Alex G. Floratos
Cynthia M. Florio
Stephanie Flynn
Dante A. Foceri
Donna Jean Fogel
Sarah Foleen
Briana Foley
John F. Foley
Nina Foley
Theodore W. Folprecht
Suzanne Saunders Folwell
Maryann Forbes
Charlene L. Forest
Christopher A. Foti
Anthony Fotopoulos Herrschaft
Jackie and Andrea Fox
Adam Frank
Marylin Frank
Arline M. Frankel
Sidney Freedman
Stephan F. Frey
David Friedland
Jack B. Friedman
Walter K. Friedrichs
Renaire Frierson-Davis
Margaret Fritz
John and Leslie Froccaro
Laurence and Carolyn Froehlich
Kristina Fuessler
Mark Fuhrmann
Sonoka Fukuma
David P. Fuller
Margaret T. Gage von Pentz
John Gahan
Carlos J. Galarza
Raymond Galinski
Matthew P. Gallagher
Ken and Susan Galligan
Stacy Gallin
Karen A. Gallo
Les Gallo-Silver
Laura M. Gambino
James and Helga Ganci
Maureen A. Gannon
Lena Garafalo
Rosemary Garcés Lebron
Rose M. Gardner
Harriet Gardy
Michael S. Garfinkle

James A. Garner
Matthew G. Garofalo
Patricia F. Garofalo
Pamela P. Garrison
Lisa L. Gasstrom
Michael S. Gavagan
Margaret L. Gaylord
Regina A. Gazzola
Florence Gellman
Eileen Y. Georges
Vita Ann Giaimo
Bernard and Loreen Gilbert
Keith G. Ginsberg
Joan S. Girgus
Wesley Gladstein
Lois P. Goetz
Chet Gold
Dorothy Goldberg
Linda P. Goldberg
Arleen Gomshay
Charles R. Gonzalez
Joseph Gonzalez
Kevin C. Goodman
Michaele E. Goodman
Kathleen A. Goodwin
Alice G. Gorczycki
Elliot Gordon
Jack Gordon
Jane K. Gortz
Charlene M. Grabowski
Marianne Grady
Yvonne L. Graham
Irene R. Granderson
Rita Ann Graves
Collene G. Greco
Don Green
Kevin Greene
Kevin and Carolyn Greene
Craig Griggs
David Grodsky
Alise Guarnaschelli
Martin Haas and Judith Kitzes
Edward F. Hackert
Christine A. Haddad
Bill Haddock
Keith R. Haffey
Emily Hakimi
Roger L. Halvorsen
Omar Hameed
Sandra Hamolsky
Mari T. Hanley
Anthony R. Hannon
Taylor D. Hansen
Sharon Hanson
Andrea G. Harder
Philip and Brenda Harewood
Patricia M. Hargrove
Jim Harinski
Bernie and Sue Harmon
Laurian E. Harper
Dannali C. Harris
Nancy Pantaleo Harris
John F. Harte
David and Sandy Harvey
Norman Hasel

Tammy Hasenzahl
William Hassell
David and Maria Hatcher
Gary and Khristie Hauck
Jeffrey and Linda Haviland
Taylor M. Hayes
Gerard A. Healy
Robin Healy
Emmanuel Hector
William F. Hedgecock
Barbara L. Heidecker
Lisa Heim-Zeller
Vanessa Hendrix
Donald and Patricia Henne
Elke B. Herold
William A. Herrington
Inge L. Heus
Kelly Hiersche
Tad Hills
Coleen D. Hodge
Lori Ann Hoeffner
Patricia J. Hoffman
Robin M. Hoffman
Robert Hoffnung
Patricia Hogg
Meg Holley
Andrei D. Hoover
Jeffrey Horowitz
Marione Horsley
Gail S. Hough
Lewis and Susan House
Amy Hovind
Michelle Howard
Stephen and Elizabeth Howard
Thomas Howard
Thomas A. Howard
Arnold and Carrie Huang
Jelain Hubbard
Lynn E. Hugger
Patricia A. Hughes-Casey
Donna Humphrey
Michael P. Hurley
Renee Hurson
Hyatt Place Garden City
Joseph Iavaroni
Christine Imrie
Ali Ince
Demetra K. Ingram
Brian R. Inselberg
International Integrated Solutions Ltd.
Robert V. Iosue
Letricia E. Iovino
Amanda Irace
Laurie H. Iskowitz
Dov N. Israeli
Mariacristina Italia
Todd A. Jackson
Ani Jacob
Amy Jacobs
Stella J. James-Gray
Eric Janssen
Martha J. Jantho
Aubily R. Jasmin
Susan E. Jasso
Linda M. Jelovich

Laura M. Jenkins
Allison A. Jerome
Jewish Federation of South Palm Beach County
Kaitlyn A. Jockers
Michael Johnson
Jacqueline Johnston
John Johrden
Ruth E. Jones
Irene E. Joseph
Patricia A. Joyce
Gregory D. Kachejian
Jeffrey B. Kadesh
Barbara E. Kammerer
Alexandra M. Kanapes
Paul and Antoinette Kanapes
Lisa Kandell
Antoniya E. Kaneva
Daniel Kaplan
Stephanie Kaplan Cohen
Kristen C. Kardas
Nancy J. Karish
Helaine Karp
Paul Karp
Elizabeth F. Kash
Robert and Adrienne Kattke
Carole Katz Fetner
Harleen Kaur
Cindy Kaye-Fink
Edward L. Kazarian
Kevin Kearney
Brian and Pamela Keeney
Marion Kelly
Silas W. Kelly
Thomas J. Kelly
Rita C. Kenn
Campbell and Cristen Kennedy
Lynne Kennedy
Mark P. Kenny
William and Monica Kenny
John and Karen Kerge
Ellen F. Kessler
Reaz Khan
Sean Kildare
Hanna Kim
Tae Kuen Kim
Michel T. Kimball
Robert A. King
Sheri A. Kipperman
Charles Kirby
Lauren Kiss
Jon Klar
Neil Klar
Dmitriy Klass
Susan Klinger
Shirley Klocke
Jay Klotz
Noam Klotz
John and Effie Knesich
Joseph and Danielle Kocal
Antonia Koch
Erec Koch
Hubert Koch
Michael and Ileen Koenig
Alfred S. Kohart
Theodore J. Kohnen
Eleni Kokoris
Stephen Koraleski
Alexander P. Kovanko
Richard R. Kozin
Kurt H. Kraeger
Madelynn J. Kraner
William A. Kromberg
Loren Kruth
Michael Kull
Todd Kunkel
Yana Kusayeva
Stavroula Kyriakakis
Katie Laatikainen
Michael J. Lagas
Marvin and Caroline Lampert
Caroline Lampert
Rebecca Landay
Kathleen Lantz
Alain Lanz
James A. LaRosa
Jeffrey Larossa
Judith F. Lasky
Donna R. Lauria
Bianca M. LaVeglia
John and Lauren Lavoie
Joan Lazarus
Helen P. Leavitt
Barbara Leb kuecher
Sally O. Lebowich
Mark Ledbetter
Eleanor Lee
Amy M. Leftenant
The Leibner Cooper Family Foundation
Janet E. Leicht
Heidi Lemanski
Kenneth F. Lemp
Menahem Less
Richard Lettiere
Rosalyn Levin
Peter D. Levit
Elaine Levitt
Joshua Levy
Frank I. Lewis
Jane Lewis
Maria D. Lewis
Jennifer B. Libby
Joseph Liebman
Lou Lignelli
Barbara S. Lipman-Wulf
Diane Liriano
Shan Liu
Michael and Sophia Livanos
Marjy Llagesse
Richard Lohne
Donald J. Lohner
Karen F. Loiacono
Emmanuel and Susan Loizides
Lorence A. Long
Mills P. Long
Jose Lopez
Kathleen Lopez
Oswaldo A. Luciano
Nancy M. Lugo
Luigi's

Matthew and Dawn Luisi
Erma J. Luke
Michael J. Luo
LYNJON LLC
Mitchell and Joanne Lyons
Joseph E. Lyons
Richard M. Lysaght
Kristin Macdonald
Ethel R. MacGill
Jurgita Maciunaite
Christina Mackay
Lizbeth P. Mackay
John MacKenzie
Jean A. MacMullen
Anthony and Nardy Madera
Kamen P. Madjarov
Deirdre Madtes
Laura Madtes
Jolea Maffei
Paula L. Magnuson
Kris M. Mahadeo
Mina Makarious
Alan Malat
Fara-Izarihs Maldonado
Robert A. Mallow
Thomas Tiktin and Madeleine Mandel Tiktin
Stanley S. Mandell
Sonia D. Maniaci
Theodore Mannarino
Eddie Mannone
David and Laura Mansfield
Donna J. Marenus
Joseph B. Margolin
Maryann Marinello
Svetla M. Marinova
Jennifer Maron
Eugene and Renee Marquardt
Tracy H. Martin
David S. Martin
Samantha S. Martin
Tracy H. Martin
Brenna Martini
Marie A. Martini
MAS Development Management LLC
Jane A. Massaro
Andrew Matinale
Michael Mattei
Gene A. Mattina
Antoinette Matye
Ralph B. Maust
Rachel Maxwell
Eric S. May
Tanya Mazakian
Kristina McCoy
Jeanine McAdam
James P. McAleese*
Julia M. McCabe
Patricia A. McCaffrey
Leo and Valerie McCaffrey
Renetta McCann
Margaret D. McCartney
Charles C. McCloskey
Matthew T. McConville
Anne McCorry
James Mccullough

John F. McDermott
Kate E. McDowell
Mary E. McGarvey
Gina M. McGovern
Kieran G. McGowan
Richard and Laura Jean McGrath
Eugene P. McGuinness
Ian S. McLaughlin
Janet E. McLaughlin
William and Marianne McLaughlin
Desmond McManus
Clarence C. McMaster
Edward and Denise McNamara
Diane M. McNeal
Francis J. McQuade
Victor and Mary Ann Mearini
Ana R. Medina
Dalia R. Medina
Mallory P. Medvene
Joseph Melchione
Joe D. Melendez
Barbara E. Melzer
Fernando Mendez
Almas Merchant
Thomas and Margaret Merle
Nancy Merola
Vicki S. Merten
Karen A. Messineo
Gladys C. Meyer
Carol Meyerson
John and Concetta Michaels
Anne E. Michel
Lorraine H. Michels
Tom and Dawn Miglioizzi
Karim Mikhail
Ruth Ann Militrano
Janice C. Miller
John A. Miller
Felicia Mills
Mahnoor Misbah
Robert and Sally Mitchell
Merrill R. Moccio
Joshua Modelo
Uma Mohan
Alex Molotsky
Helen Montana
Robert W. Montgomery
Richard N. Mooney
Mark Morisi
Jaclyn Morse
Zelda Moser
Lisa Moses
Erica Motamed
Michael M. Motamed*
Laura Mroz
Anne Mungai
Betty L. Murphy
Karen V. Murphy
Judy Murrah
Dennis M. Murray
Maritza E. Myers
Lynne Myron
Melvin and Joan Nagler
Annette Nahin
Vincent and Robyn Napolitano

Kyle Naranjo
Maryann Nardone
Priya S. Nayar
Patricia M. Nelson
Renee Nelson
Susan Nelson
Gregory P. Nerko
Nesco Bus and Truck Sales, Inc.
Monise Neumann
Chrisann Newransky
Hoang Long Nguyen
Mary R. Nichols
Pamela A. Nicalarakis-Lewis
Kerry L. Nicollet
Larisa Niede
Anthony Nigrel
Steve Nikrant
Sherryl Noble
Karen Nofer
Farida H. Noorani
Susan M. Nullet
Gladys Nussenbaum
Uchechukwu Nwakanma
Mario P. Obertis
Elizabeth O'Brien
Mollie O'Brien
Patricia G. O'Brien
Priscilla A. O'Connell
Philomena C. O'Connor
Sarah N. O'Connor
Stuart and Joyce O'Connor
Kathleen O'Donnell
Daniel J. O'Dwyer
Helen M. Oehrlein
Jamie Okin
M. Cynthia Oliver
Daniel L. Olson
Ohiro D. Oni-Eseleh
Ngozi Onyia
Ronald M. Oriani
Jay Oringer
Kyle Oringer
Sue L. Orr
Zainab Osakwe
Paulette B. Osborne
Lillian C. Owens
Bobbie C. Oxendine-Hutchins
Matthew Paolo
Nikolas Papaevagelou
Christine Papaspiridakos
Paulette V. Pappas
Gina Slater Parker
Dominick and Holly Parlo
Timo M. Partanen
Elaine U. Pastor
Joan Paternoster
Jackie Patterson
Susan Payton
Harriet Pechter
Rosa F. Pereira
Juan C. Perez
Diane M. Pergola
Georgia Perrone
Michele R. Pesiri
Andrew Peters

Eric R. Petrie
James and Barbara Petrillo
Diana M. Petrillo
Michael J. Petrizzi
Robert and Joan Petrowsky
Marie Pette
James Pfister
Nicholas A. Philippides
Sevgi Piatos
Dominick Picarello
Ryan Picarello
Schanica Pickens
Sharon Pikus
Jenna Piller
Jack Pirozzolo and Anne Depew
Albert and Judith Platt
Mary Polak
Lynn Polcari
Livia A. Polise
Creola Pollock
Jeremy Pope
Josselyn E. Portillo
Phyllis R. Poses
Frances Pravata
David L. Praver
June A. Price
Princeton Area Community Foundation
Louise T. Prussack
Allison Prystupa
Paul and Carly Pugliese
Jai Punjwani
Gordon C. Purdie
Christy M. Pyatt
Joanne Quin-Beers
Laurence and Marianne Quinn
Steven and Melinda Rabinowitz
Christopher and Maria Racalbuto
Cynthia Radol
RAF Construction & Development Corp.
Denise L. Raimondi
Charles S. Rait
Melvin S. Rapelyea
Kalervo and Margaret Raustiala
Brenda L. Redick
Barry A. Reed
Michael Rees
Patricia R. Reeves
Michael Regovic
Christopher D. Reisert
Marilyn J. Remm
John A. Remus
Richard W. Reutzel
Linda J. Rezak
Dean T. Ricci
Gloria E. Richards
Roy W. Richey
Michel G. and Madeline Richez
Adam Richichi
Brian and Ellen Ridgway
Ben Rifkin
Ilene Rifkin
Jonathan Rifkin
Elizabeth A. Rilling
Lawrence Ripak
David and Catherine Rivera

Anita W. Rivman
Arianna Rizai
Krista Rizzo
John R. Roarke
Traci D. Robinson
Helen R. Robinson-Wu
James X. Rochel
Errol Rodriguez
Kenneth C. Rondello
Diana Ronell
Katherine Rosen
Penny Rosen
Milton Rosenblatt
Loren E. Rosenthal
Terrence Ross
Nathan Ross
Allen N. Rothberg*
Reva Rothenberg
Thomas Roulette
Tom Roulette
Maria Rowitt Eble
Devon Rubenstein
Gary Rubin
Martin H. Rubin
Nicole Rudolph
Rosemary Rudolph
Michael and Barbara Russell
Russo Development
Steven and Hillary Rutter
Julio C. Ruz-Diaz
Edward Ryan and Sharon Bieber-Ryan
Jana Ryan
Patricia M. Ryan
Marian Ryan Foley
Beverly J. Safian
Cosmo Saginario
Brad G. Sahlstrom
Ronald J. Saleh
Richard V. Salembier
Christine T. Salita
Stephen and Elaine Salvati
Virginia Salvatore
Christina M. Sama
Edward and Elaine Sands
Oluyinka Sangobowale
Michael Santaniello
David Sanzone
Elizabeth Saracino Sanchez
Vanja Savic
Alexa A. Savino
Eric A. Sawyer
Jean Saxon
Laura M. Schaefer
Nancy E. Schaffer
Joy Scharfman
Edward J. Schenk
Christina Schiavone
Jacqueline Schiff
Alison Schiff
Paula K. Schimmel
Norman Schneider
Janet R. Schoepflin
Ian Schraier
Laura R. Schulte
Jon Schuppe

Susan Schuppe
Diana L. Schwinge
Gisele A. Scott
Leo J. Scott
Anne Keenan and Alexis Seeley
Joan Seesle
Jerrold W. Segal
Audrey M. Seidl
Jaclyn Seidl
Menchi Serina
Sitora Serverova
James E. Sewell
Robin B. Shafran
Kenneth V. Shanik
Merna Sharqi
Cristina Shaul
Daniel R. Sheehan
Pamela G. Sheiffer
Roland Shen
Rebekah Shin
Christopher P. Shkuda*
Robin Shoemaker
Richard R. Shouldis
Anustha Shrestha
Ron and Kathy Siano
Stephen and Peg Siciliano
Gene and Sandra Siegal
Ruth L. Siegmann
John Sievers
Carol Silano
Lawrence and Patricia Silano
Margaret R. Silberger
Joseph A. Silcott
Michelle Silva
Amira Simha-Alpern
Renee Simon
William V. Sinski
Cynthia Sirico
Claudia M. Sklar
Anne E. Sklenar
Elizabeth T. Slater
Allan and Nancy Sloan
Joseph Small
Barbara-Helene Smith
Brendan Smith
Donald C. Smith
Joseph M. Smith
Nancy Z. Smith
Paul and Carole Smith
Elizabeth Snow
Jeanne E. Sofia
Gerard Soled
Stanley Solmonsohn
Ryan M. Soltan
Deonaraine Sookdeo
Carl Soranno and Audrey Paulssen-Soranno
Andrea Spata
David A. Spengler
Richard M. Spinelli
Laura A. Sponaugle
Janet Spool
Carolyn M. Springer
Ruth and Jeff Springer
Caitlin V. Stamm
Elena Stankovska Castilla

Ned Stanton
Edward V. Stedronsky
Juliet and Robert Steele
Marilyn C. Stefans
Nina S. Stephan
Robert B. Stephen
Lleshia Stevens
Susan Reeseman Stevens
Anne Stewart
Linda J. Stewart
Thomas M. Steyer
Irene B. Stillwell
Brian and Janet Stone
Joy Stone
Richard M. Stone
Leonora A. Storms
Paul M. Strachan
Gladys M. Stuart
Harry A. Stuckey
Jeanette and John Sturmer
Glenn P. Suchy
Maria A. Sukhanova
Elizabeth Sullivan
Lavern V. Sullivan
Sean Sullivan
Anatol Surak
J. Bruce and Lisa Sussman
Kelly Swartz
Joanna Sweeney
Patricia A. Sweeney
R. Bruce Swensen
Kevin and Debra Swenson
Michael S. Swett
Franklin T. Sylvester
Barbara A. Szefc
The Szefc Legacy Alaska Trust
Olufunmilayo A. Taiwo
Robert M. Tanzer
Kim M. Taratko
Elisa and Michael Tavilla
Crane M. Taylor
TD Bank
Richard V. Tea
Kevin Telford
Alison Tempestilli
Sara Terrana
Kristin F. Testani
Nancy Teumer
Gina M. Thompson
Patricia M. Thomson
Peggy Thomson
Katherine M. Throckmorton
Terry Tietjen
Suzanne Tisne
Mary-Grace Tomecki
Godfred E. Tong
Patricia E. Torrente
Marilyn Torres
Amy Toulson
Regina A. Tracy
Brenda Tribush
Mei-Ya Tsai
Yu-Tsui T. Tsai
Karyn Tse
Sumru Tufekcioglu

Mary Jane Tunny
Nairi Turabian
Luther L. Turner
James A. Underwood
Rudolf E. Urban
Edna Uthgenannt
Kenneth J. Uva
Maria Vacca
Rachel Vacca
Geraldine N. Valencia-Go
Melissa Van Alstine-Parris
Charlotte T. Van Blenis
Colin Van Dyke
Elizabeth Van Praag
Maria Vargas Destefano
Rani Varghese
Roselyn Vassilatos
Ronald L. Vavruska
Maria A. Vazquez
José Velasquez
Majella Venturanza
Chelsea Vera
Jair Vera
Nicholas Verbeeck
Maria H. Verderber
Kamlesh Verma
Carl Viel
John N. Vincent
Eleni Vinieris Poulos
Adam Visconti
Nicholas C. Vlachos
Louis P. Vlogianitis
Jean O. Vogeley
Betty R. Vohr
Brian G. Volpi
Kirill and Yuliya Vortman
Brian R. Vorwald
Joseph M. Wall
Catherine M. Helck Wallace
Maureen Wallace
Veronika Wallace
David M. Wallach
Laraine Wallowitz
Dianne M. Wamsley
Hao Wang
Louise E. Washington
Geraldine M. Watson
Lavonia Watson Francis
Gilbert and Melinda Weatherly
Suzanne A. Weed
Justin Weekes
Gail A. Weinman
Noam Weinstein
Michael C. Weisner
Pamela R. Weiss
Darryl M. Weissman
Ross R. Wells
Chotsani West
Aaron Westendorf
Robert E. Wetzels
Sharon S. Wexler
Frank A. Wharton
Carla L. White
Margery L. White
Nyrekia White

Carolyn K. Whitman
Kim Whitney
Marie L. Wicks
Iris C. Williams
Evadney Wilson
Kathryn Wilson
Kevin G. Wilson
Suzanne Wilson
Todd A. Wilson
Michael P. Windischmann
Mitch Winston
David C. Wirth
Stephen M. Wirth
James and Gail Wise
Shane A. Wiseman
Helen Wist
Adam M. Wittenstein
Faith A. Wohl*
Eugene Wojciech
Thomas M. Wojcik
Lori B. Wolf
Linda Wolfowitz
Allyson Wolper
Nicole F. Wong

Samuel Wong
Thomas A. Wood
Terry Woods
Joyce Woram
Theresa A. Wurmser
Alwyn G. Wyse
Elizabeth A. Wysocki
Lee Anne Xippolitos
Mihail Yanchev
Baohua Ye
Suzanne Yim
Christopher B. Young
Yusuf Z. Yusuf
Robert J. Zaino
Emil J. Zakutny
Nick Zaratidis and Mary Ann
Wolert-Zaromatidis
Anna Zinko
Herb I. Zinn
Bradley D. Zodikoff
Scott T. Zotto
Robert E. Zsunkan

The Honor Roll of Donors contains names of individuals and organizations who have made gifts to the University that were processed through the Office of University Advancement between September 1, 2020, and August 31, 2021. There could be several reasons why your name does not appear in what you believe to be the appropriate giving level—or not appear at all:

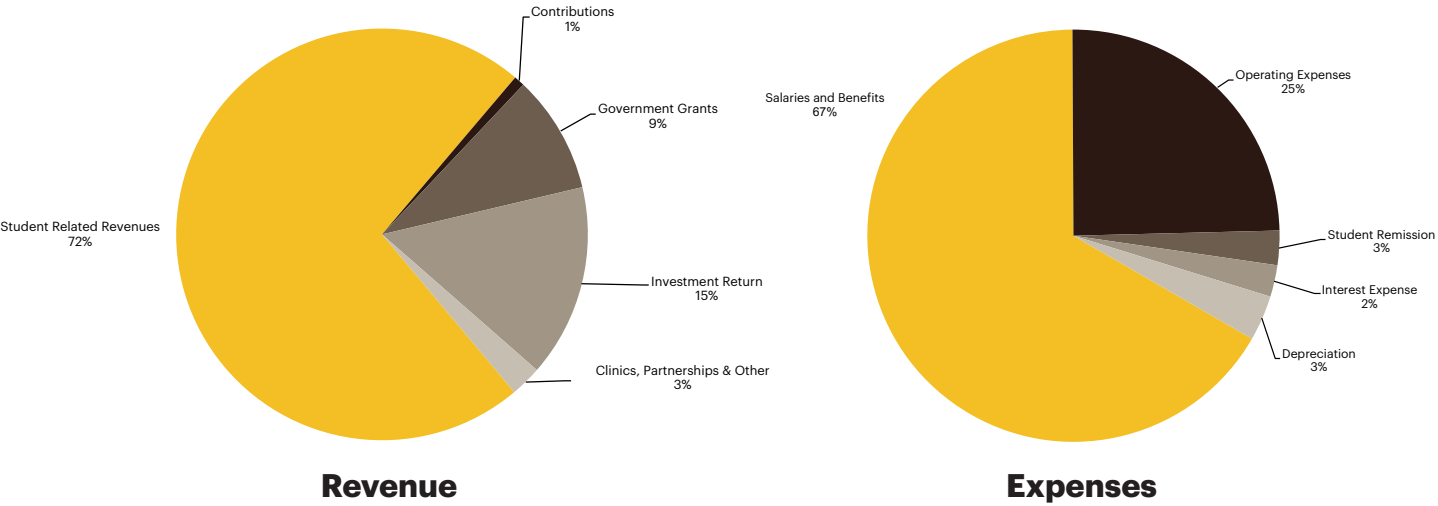
- 1. You made your gift either before September 1, 2020, or after August 31, 2021.
- 2. You gave more during this period than you realize: Your name may be in the next giving level.
- 3. You made a pledge instead of an outright gift. If you made a pledge between September 1, 2020, and August 31, 2021, but have chosen to begin fulfilling it after August 31, 2021, your name will not appear in this honor roll, which reflects only gifts received. Alternatively, if you have fulfilled a portion of your pledge during this time frame, your name may appear in a lower category.
- 4. You have requested to remain anonymous.

If we omitted your name in error, we would like to hear from you. Any omission is unintentional and the Office of University Advancement would appreciate notification. Please contact the Office of University Advancement at 516.877.3250.

The Financials

Although full recovery from the pandemic is not yet complete, Adelphi remains on a remarkably firm financial footing. Innovative crisis planning, carefully planned “rainy day” surpluses, exceptional public health leadership and a well-thought-out recovery plan brought stability and a strong forecast for the future. In 2020, Standard & Poor’s reaffirmed our bond rating of A- with a stable outlook, despite the fact that 40 percent of colleges and universities received rating downgrades.

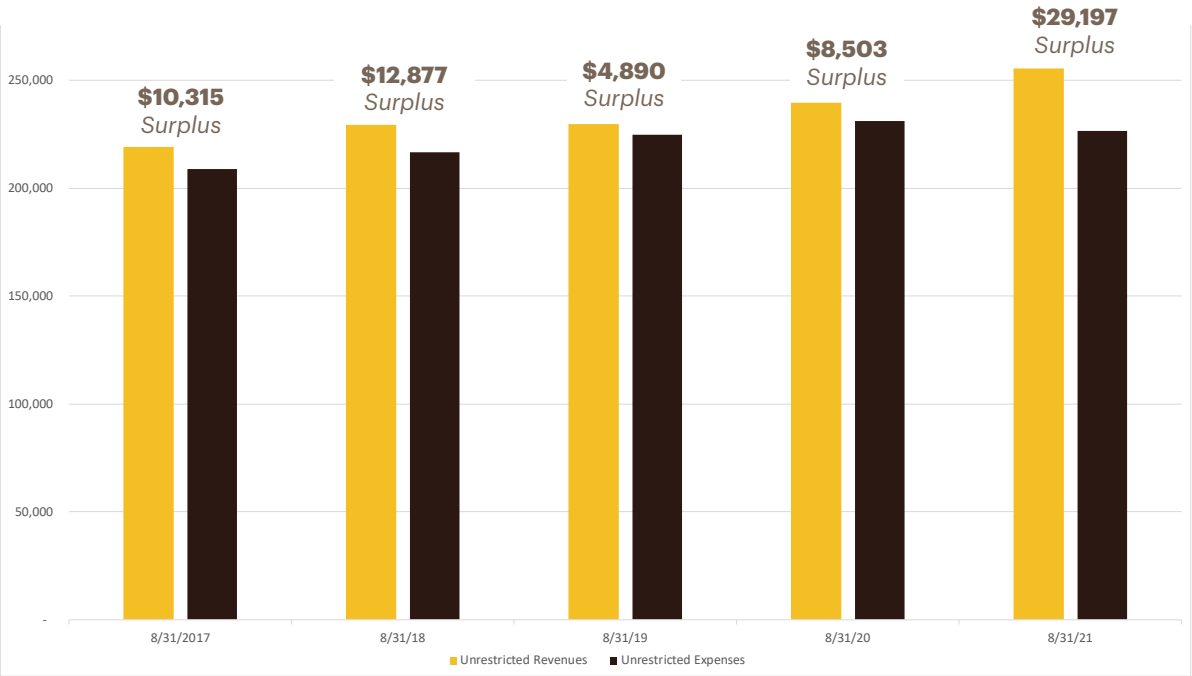
Fiscal Year 2020–2021 Revenue and Expenses



Financial Statements August 31, 2021

Statements of Activities			
Revenues	2021	2020	2019
Student-Related Revenues	\$191,251,679	\$204,230,374	\$208,217,231
Contributions	2,201,753	6,763,122	6,113,143
Government Grants	24,529,199	11,806,466	5,845,293
Investment Return	40,023,618	19,749,192	4,463,323
Sales and Services of Educational Departments and other	6,459,472	4,964,105	8,967,434
Total Revenues	264,465,721	247,513,259	233,606,424
Expenses	2021	2020	2019
Salaries and Benefits	\$150,825,887	\$166,541,150	\$159,499,623
Operating Expenses	55,888,619	45,897,396	45,488,979
Student Remission	6,105,802	6,577,345	6,638,551
Interest Expense	5,622,901	4,559,876	5,512,765
Depreciation	8,056,148	7,627,479	7,693,491
Total Expenses	226,499,357	231,203,246	224,833,409
Increase in Net Assets	\$29,611,439	\$15,448,943	\$8,773,015

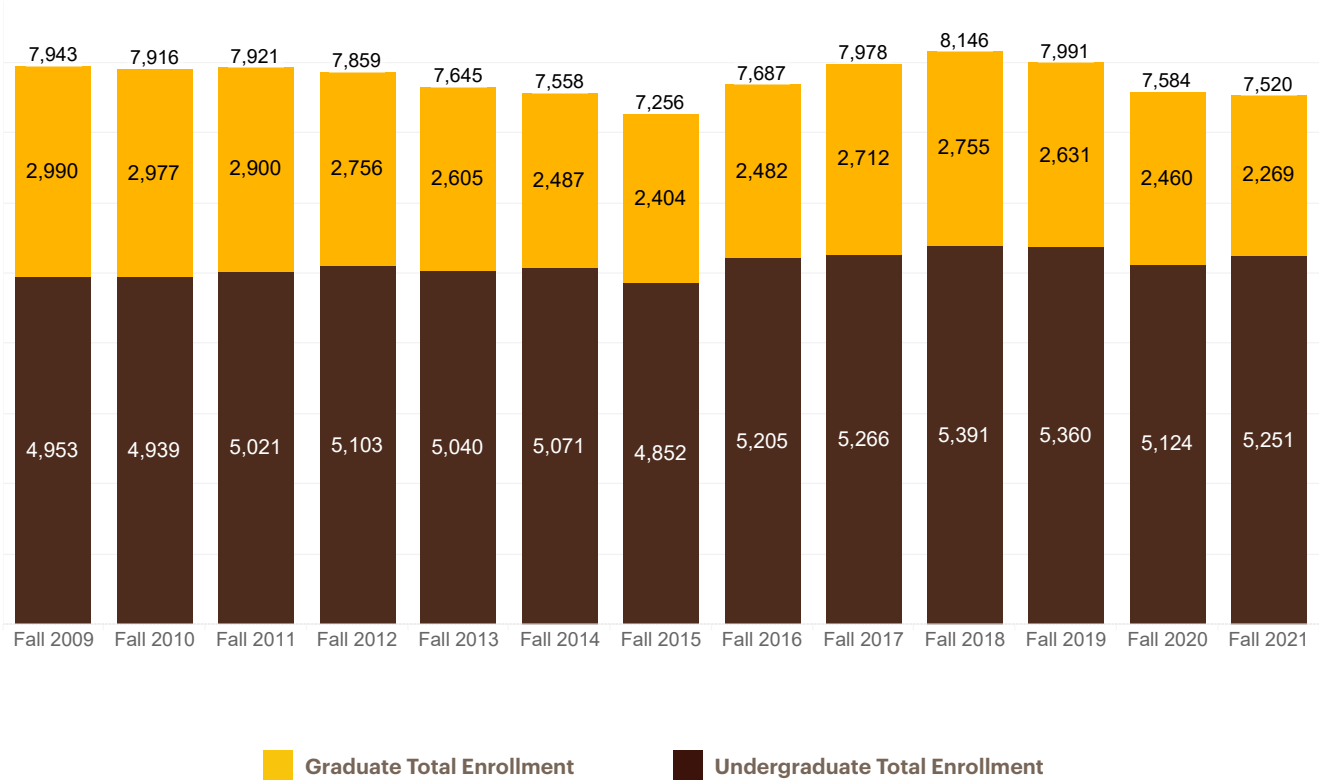
Revenues and Expenses Without Donor Restrictions Before Nonoperating Activities



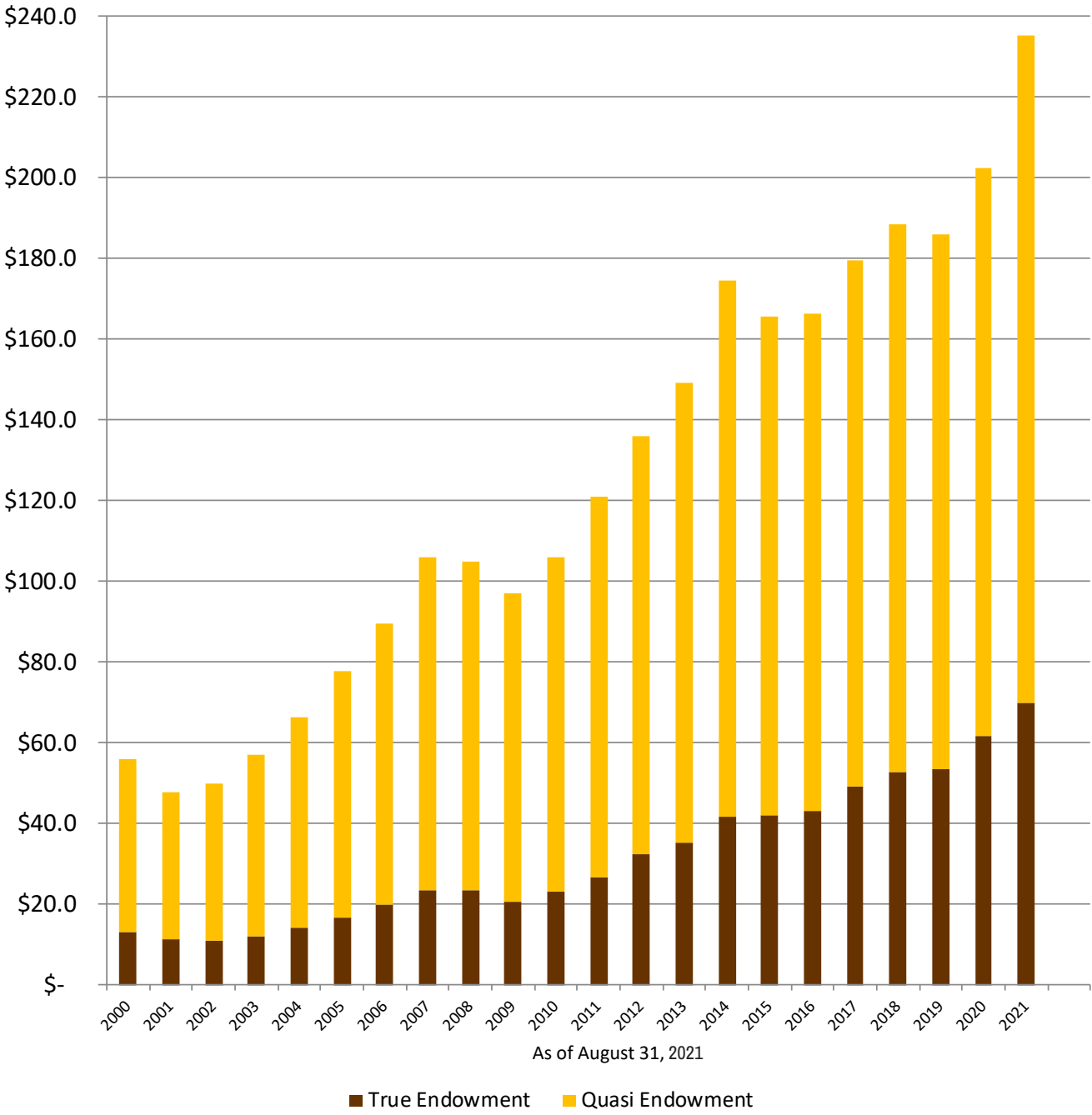
Financial Statements August 31, 2021

Statements of Financial Position			
Assets	2021	2020	2019
Cash and Short-Term Investments	\$40,287,188	\$22,580,167	\$46,240,588
Receivables	12,532,049	16,173,499	13,904,586
Prepaid Expenses and Other Assets	12,363,891	12,934,649	17,888,298
Investments	241,330,090	217,380,062	199,836,347
Land, Building and Equipment	277,655,505	279,294,467	247,650,871
Right-of-Use Assets	11,383,569	—	—
Total Assets	595,552,292	548,362,844	525,520,690
Liabilities	2021	2020	2019
Accounts Payable and Other Liabilities	\$28,330,307	\$36,483,821	\$27,476,456
Deferred Revenues	45,362,249	40,419,249	48,554,507
Long-Term Debt	128,254,787	128,742,164	122,221,060
Operating Lease Liabilities	12,506,534	—	—
Total Liabilities	214,453,877	205,645,234	198,252,023
Net Assets	2021	2020	2019
Without Donor Restrictions	\$300,460,505	\$270,849,066	\$263,207,349
With Donor Restrictions	80,637,910	71,868,544	64,061,318
Total Net Assets	381,098,415	342,717,610	327,268,667
Total Liabilities and Net Assets	\$595,552,292	\$548,362,844	\$525,520,690

21st Day Fall 2021
Total Enrollment Trends



2021 Endowment Funds (in millions)



Financial Aid

Spending on student financial aid has increased by more than \$23 million during the past five years.

Year	Institutional	Restricted	Total
2017	62,487,032	2,378,004	64,865,036
2018	67,134,316	2,152,399	69,286,715
2019	76,387,963	2,480,169	78,868,132
2020	79,973,921	2,676,682	82,650,603
2021	84,869,577	3,200,393	88,069,970

Growth in Net Assets

Net assets have grown more than 26 percent, or \$79 million, in the past five years.

Year	Without Donor Restrictions	With Donor Restrictions	Total
2017	245,319,542	56,915,804	302,235,346
2018	258,318,170	60,177,482	318,495,652
2019	263,207,349	64,061,318	327,268,667
2020	270,849,066	71,868,544	342,717,610
2021	300,460,505	80,637,910	381,098,415

Capital Expenditures

The University has invested approximately \$62 million in capital improvements and equipment over the past five years.

Year	Buildings	Equipment	Total
2017	3,511,972	1,322,164	4,834,136
2018	2,879,222	1,005,121	3,884,343
2019	6,970,991	696,947	7,667,938
2020	38,458,063	973,612	39,431,675
2021	3,459,959	3,104,566	6,564,525

Long-Term Debt

Long-term debt has increased by only \$6 million, while investing over \$62 million in capital improvements.

2017	121,943,944
2018	118,684,639
2019	122,221,060
2020	128,742,164
2021	128,254,787

ADELPHI
UNIVERSITY

125
years

Building
Tomorrow
Together