



ADELPHI NY STATEWIDE BREAST CANCER HOTLINE & SUPPORT PROGRAM

800.877.8077 • adelphi.edu/breast-cancer

-2025-
Celebration of Survivorship
Thursday, October 16, 2025



October 2025 - Newsletter

[View Website](#)

October is Breast Cancer Awareness Month

Adelphi Breast Cancer Hotline: 800.877.8077
or Text: 516.262.3263

ADELPHI NEW YORK STATEWIDE
BREAST CANCER HOTLINE & SUPPORT PROGRAM

- ♦ professional counseling
- ♦ peer support
- ♦ advocacy
- ♦ community outreach
- ♦ workshops
- ♦ health referrals



All services are free and confidential

HOTLINE (Hablamos Español)
800.877.8077
hotline open 9 am - 9 pm

TEXT
516.262.3263
texting available 9 am - 5 pm

adelphi.edu/breast-cancer

The Adelphi Breast Cancer Program is here to help, listen and support you and your family. If you or someone you love has been diagnosed with breast cancer, is experiencing difficulty navigating the health system, looking for vital community resources, or want to talk, please call us at:

800.877.8077 or text us at **516.262.3263**. Our licensed Social Workers, and trained volunteers are here to help you cope and are available from 9 AM to 9 PM 365 days a year. Calls to the hotline are answered in both English and Spanish. Support is a call or text away.



The STEP Program

The Adelphi NY Statewide Breast Cancer Hotline & Support Program was awarded a significant five-year grant from the Centers for Disease Control and Prevention (CDC) to initiate the **Survivorship, Treatment, Education and Peer Support (STEP) Program** which provides psychosocial support services and referrals to improve the quality of life for young women diagnosed with breast cancer, MBC patients and their families.

The STEP Program also provides educational workshops and forums, provider education and a video series.



Today, October 1st we are happy to share our next video in the STEP Program series. Breast cancer survivor **Chris Amatulli** opens up about her journey with honesty and courage, reflecting on the challenges she faced and the support she received from the Adelphi NY Statewide Breast Cancer Hotline & Support Program. Her story highlights the importance of compassion, resilience, and community in navigating life during and after breast cancer.



Later this month, **Wendy Kaplan, MS, RDN, CSO, CDCES, CDN**, a registered dietitian specializing in oncology nutrition, will discuss how personalized nutrition can support cancer treatment, ease side effects, and promote long-term health. From practical tips on meal planning and healthy cooking to the power of plant-based foods and key nutrients, Wendy offers guidance to help individuals nourish their bodies and live well during and after cancer.

[Visit](#) our YouTube channel for future profiles and educational videos.

CELEBRATION OF SURVIVORSHIP 2025

Last Chance To Register!

[Click here](#) to register for Celebration of Survivorship 2025.

A vertical poster with a pink floral border. The top half has a white background with the text "Register Today!" in a large, black, serif font. Below this is a circular logo for the "ADELPHI NY STATEWIDE BREAST CANCER HOTLINE & SUPPORT PROGRAM" with the phone number "800.877.8077" and a pink ribbon. To the right of the logo is a large, gold, 3D-style "30" with "YEARS" in small text above it and "ANNIVERSARY" in a gold banner below it. Below the logo and anniversary text, the words "-2025-", "Celebration", and "of Survivorship" are written in a black, cursive font. The bottom of the poster has a black background with the text "Thursday, October 16, 2025" and "4:00 - 6:00 pm" in a white, sans-serif font.

at the Ruth S. Harley University Center Ballroom
Adelphi University, Garden City, NY

Our Speakers

[Learn more](#) about our amazing speakers.



Debra Williams

Diagnosed in 2024

Breast Cancer Survivor and Advocate



Katerina Dinas-Raptis

Diagnosed in 2013

Founder of Kat's Ribbon of Hope, Inc.



Lori Fagan

Diagnosed in 2012

Adelphi Breast Cancer Program Hotline Volunteer

THANK YOU TO OUR 2025 CELEBRATION OF SURVIVORSHIP SPONSORS

VISIONARY SPONSORSHIP

Adee & Don Hendler



AMBASSADOR SPONSORSHIP



ALLY SPONSORSHIP

TANNA_{MD}



Jeff and Kathi Glass
Digital Graphic Imagery Corp.

SUPPORTER SPONSORSHIP
The DeMatteis Family

UPCOMING FORUM

HOPE & HEALING:

Advancing Breast Cancer Care
with Compassion and Science

Thursday, November 6, 2025
(12:00 - 1:00 pm) on Zoom



Date: Thursday, November 6, 2025

Time: 12:00 pm - 1:00 pm

Place: Zoom

Registration: [Click here](#) to register

This forum is free, however, you must register to attend.

**Once registered you will receive a confirmation email which includes the zoom link.*

Join the Adelphi NY Statewide Breast Cancer Hotline & Support Program on
Thursday, November 6, 2025 for an enlightening conversation with **Dr. Ruby Sharma**, an attending physician at the **RJ Zuckerberg Cancer Center**, whose

clinical practice is exclusively dedicated to the care of patients with breast cancer. Board Certified in Internal Medicine, Medical Oncology, Hematology, and Palliative Medicine, Dr. Sharma brings a comprehensive, compassionate, and evidence-based approach to cancer care.

In this session, Dr. Sharma will share her insights on several critical and often complex areas of breast cancer care, including triple-negative breast cancer, breast cancer diagnosed during pregnancy, and the importance of high-risk screening and early detection. She will also discuss how personalized, multidisciplinary care can improve outcomes and support patients through every phase of their journey.

Whether you're a healthcare provider, patient advocate, or looking to learn about advances in breast cancer care, this forum offers a unique opportunity to hear from a leading expert in the field.



Registration: [Click here](#) to register

SUPPORT GROUPS



See our [support group schedule](#)

To participate in one of the listed support groups please call our Hotline at **800.877.8077** or email breastcancerhotline@adelphi.edu to pre-register.

All groups are free but registration is required. All groups are facilitated by a licensed social worker.

If you are interested in a support group or service that is not listed, please contact Angela Papalia LMSW: apapalia@adelphi.edu.

All groups are facilitated by a licensed social worker of the Adelphi Breast Cancer Program. These programs are supported by grants from the Alpern Family Foundation, Cooperative Agreement DP 24-0061 from the Centers for Disease Control and Prevention, Kat's Ribbon of Hope, Marilyn Lichtman Foundation, New York State, Northwell Health Cancer Institute and Pink Aid.

Drop-In Support Group – Virtual

Young Women's Drop-In Support Group – Under 45 years of age *Virtual

This group will address the unique needs of young women with breast cancer and will meet via zoom.

For more information and to register, please contact Lois Goetz LMSW at: 516.877.4347 or goetz@adelphi.edu.

Drop-In Support Group – Virtual

Newly Diagnosed Drop-In Support Group – *Virtual*

This group is for women who are newly diagnosed with breast cancer and will meet via zoom.

For more information and to register, please contact Angela Papalia LMSW at: 516.877.4329 or apapalia@adelphi.edu.

Drop-In Support Group – Virtual

Hormone Therapy Drop-In Support Group – *Virtual*

Now forming, bimonthly support group will meet via zoom. This support group is for breast cancer patients and survivors who are currently on hormone therapy (as adjuvant therapy).

For more information and to register, please contact Angela Papalia LMSW

at: 516.877.4329 or apapalia@adelphi.edu.

Ongoing Support Group – Virtual

Stage 4 Breast Cancer Support Group – *Virtual*

Men and women with Stage 4 Metastatic Breast Cancer are welcome to join an ongoing twice-monthly group via zoom to share information, feelings, hopes and coping strategies.

For more information and to register, please contact Lois Goetz, LMSW, ACSW at: 516.877.4347 or goetz@adelphi.edu.

SUPPORT GROUP FOR SPANISH SPEAKING WOMEN

Cafecito - *Virtual*

A Spanish-language support group for breast cancer patients and survivors. This group meets every other week via zoom.

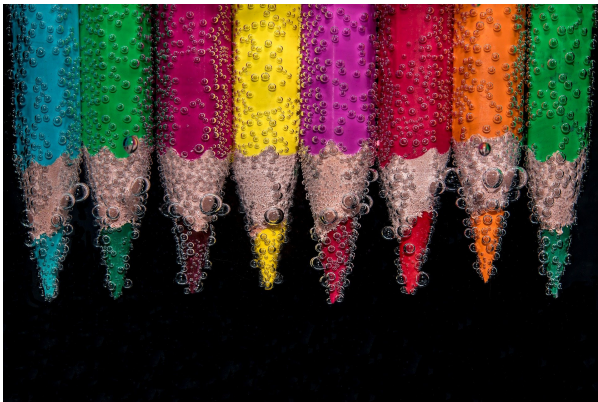
Cafecito

Un grupo de apoyo para pacientes y sobrevivientes de Cancer del seno.

Call Angela M. Papalia, LMSW (516) 877-4329.

Llame a Angela M. Papalia, LMSW (516) 877-4329.

ONLINE CREATIVE ARTS WORKSHOPS



Our (4) week creative arts workshops empower participants to express themselves using art. This therapeutic program offers a safe place to communicate your thoughts, feelings, concerns, problems, hopes and dreams. Our professional staff

guides you through different exercises and discussions helping you to find ways to gain personal insight and develop new coping skills.

For information on future workshops, please call **Angela M. Papalia, LMSW** at (516) 877-4329 or email apapalia@adelphi.edu.

Our creative arts workshops are facilitated by **Angela M. Papalia, LMSW**, Assistant Director for the Adelphi Breast Cancer Program along with **Kimberly Newman, BFA**, Communications and Marketing Specialist for the Adelphi Breast Cancer Program.

Help Support Us This October

Throughout Breast Cancer Awareness Month help support the Adelphi Breast Cancer Program.

Ghosts and Goblins for Cancer



Join us this October for breast cancer awareness month in Island Park. Each year, Frank Amoruso decorates his Island Park home as **THE BATES MOTEL** and helps raise money with his haunted house to support the Adelphi NY Statewide Breast Cancer Hotline and Support Program.

Visit the BATES MOTEL this October at **1039 Traymar Blvd, Island Park**.

Power of Pink - Shop Like A VIP



Esther Fortunoff Greene is a proud supporter of the Adelphi Breast Cancer Statewide Hotline.

Shop like a VIP with our Power of Pink special code **ABCP25** – you can buy a meaningful gift at **20% Off*** this October.

www.EFGDesigns.com

* Use code ABCP25 at checkout. Applies to in-stock items only. May not be combined with other promotions. Offer ends October 31, 2025 at 11:59PM ET.



Starting on October 1, 2025, shop like a VIP with the **POWER OF PINK** Esther Fortunoff Greene is a proud supporter of the Adelphi Breast Cancer Program. This October shop at [**www.EFGDesigns.com**](http://www.EFGDesigns.com) using code **ABCP25** – purchase a meaningful gift at 20% off this October.

17th Annual Kathy Donegan Memorial Breast Cancer Fundraiser



Join the NYS Fraternal Order of Court Officers for the 17th Annual Kathy Donegan Memorial Breast Cancer Fundraiser on Thursday, October 30, 2025 from 5:30 - 7:30 pm at Cornerstone in Mineola. Kathy was a beloved volunteer of the **Adelphi NY Statewide Breast Cancer Program** and court county clerk.

Breast Cancer Awareness Week at Adelphi University



Once again, the Adelphi NYS Breast Cancer Program is proud to partner with Campus Recreation, as well as the Athletic Department for **Breast Cancer Awareness!** This year, we will raising awareness the week of **10/20**. Be on the lookout for our outreach tables on campus!

The Pink Patch Project Sticker Edition



Adelphi Public Safety has teamed up with the **Adelphi NY Statewide Breast Cancer Hotline & Support Program** to promote Breast Cancer Awareness Month. The Pink Patch was launched in 2020 by Sergeant Gerry Lennon of Adelphi's Department of Public Safety and Transportation. **The Pink Patch Sticker** will help raise funds for the Adelphi NY Statewide Breast Cancer Hotline & Support Program. It also aims to spark dialogue, promote awareness of our hotline and support services, and emphasize the crucial role of early detection in battling breast cancer.

News & Press Releases

[Click here](#) to read our newest press releases

September 3, 2025

Adelphi's Warriors Book Club Offers Community, Conversation, and a New Fall Read



On Monday, September 29 at 7:00pm, the Adelphi NY Statewide Breast Cancer Hotline & Support Program invites survivors, caregivers, and supporters to join its Warriors Book Club for a free virtual gathering.

September 3, 2025

Adelphi Breast Cancer Program Launches STEP Program Video Series for Breast Cancer Survivorship and Education

The Adelphi NY Statewide Breast Cancer Hotline & Support Program is proud to announce the launch of its new Survivorship, Treatment, Education, and Peer Support (STEP) Program, designed to provide licensed social work services, vital resources through educational workshops and forums, provider training, and an inspiring video series.

September 15, 2025

Adelphi Breast Cancer Program to Host Annual Celebration of Survivorship Gala Honoring Resilience, Community, and Hope

Garden City, NY — On Thursday, October 16, 2025, the Adelphi NY Statewide Breast Cancer Hotline & Support Program will host its annual Celebration of Survivorship Gala, an evening dedicated to honoring the strength of breast cancer survivors, patients, caregivers, and their families. The event will take place from 4:00 – 6:00 PM at the Ruth S. Harley University Center, Thomas Dixon Lovely Ballroom, on the Adelphi University campus.

[READ MORE](#)

Quick question, are you following us on our socials?

The Adelphi Breast Cancer Program offers **many** different ways to stay connected. The good news is that you don't have to choose! We encourage you to connect with us across **all** our social media channels.

SOCIAL MEDIA



[facebook](#), [X](#), [linkedin](#), [instagram](#), [youtube](#)



Support Us

There are many ways for you to be involved with the Adelphi NY Statewide Breast Cancer Hotline & Support Program.

As a statewide, not-for-profit organization, we provide free, bilingual social work services, peer support, and education to the breast cancer community.

Ways You Can Get Involved

We rely on grants and donations to continue our vital work. Without your support, we may not be able to provide these life-saving services to those who need them most.



Donate

Your support matters. By donating to the Adelphi NY Statewide Breast Cancer Hotline & Support Program, you directly contribute to our mission of providing vital services and assistance to individuals, families, and caregivers affected by breast cancer. Every tax-deductible contribution helps us expand our reach, enhance our resources, and provide support to those in need.

Make A Gift



Become a Volunteer

Dedicated and professionally trained volunteers are at the heart of everything we do. Our experienced volunteers answer calls to our breast cancer hotline and provide support, resources and referrals across New York State.

Volunteer Training Information



Fundraising Initiatives

Get involved to host and/or support us to raise awareness and funds for the Adelphi NY Statewide Breast Cancer Hotline & Support Program.

Help Raise Funds & Awareness

**The Adelphi Breast Cancer Program
wishes our volunteers
the happiest of birthdays!**



THANK YOU TO ALL OUR SPONSORS

(Listed below in alphabetical order)

Alpern Family Foundation Inc.

Centers for Disease Control and Prevention

Kat's Ribbon of Hope

Manhasset Women's Coalition Against Breast Cancer

The Junior Coalition of the Manhasset Women's Coalition Against Breast Cancer
The Marilyn Lichtman Foundation
Nassau County Office for Housing and Community Development
New York State Department of Health
Northwell Health Cancer Institute
Pink Aid

Please visit our website at adelphi.edu/breast-cancer
Donate to our cause at adelphi.edu/breast-cancer/donate
