



ADELPHI NY STATEWIDE
BREAST CANCER HOTLINE & SUPPORT PROGRAM

800.877.8077 • breast-cancer.adelphi.edu

JUNE is *National*
CANCER
SURVIVOR
MONTH



June 2024 - Newsletter

[View Website](#)

June is National Cancer Survivor Month

National Cancer Survivor Month is a time to increase awareness about life after cancer. The volunteers at The Adelphi Breast Cancer Program know what you are going through. They are ready to offer information regarding mammography screening referrals, treatment, support services and survivorship resources.

We are here to answer your questions, match you with someone who understands what you are going through, and provide resources in the community you live in. Our licensed social workers and volunteers are just a call away **1-800-877-8077**.

Read our [volunteers encouraging testimonials](#) on life after cancer.

Pride Month (June 1, 2024 - June 30, 2024)



REFLECT. EMPOWER. UNITE

As we welcome the month of June, we recognize **National Cancer Survivors Day and Pride month**, celebrating every single individual and their extraordinary uniqueness. Here at the Adelphi Breast Cancer Program, we honor, accept and respect all who courageously face breast cancer every single day. [Click here](#) to visit us online.

We are here for you!
800.877.8077

Comedy Night Fundraiser (September 26, 2024)

Join us for "**LAUGH OUT LOUD**" at **Governors Comedy Club**
Benefiting the Adelphi Breast Cancer Program.



Event Details

Date: Thursday, September 26, 2024

Time: Doors open at 6:30 pm
Please arrive by 7:30 pm (Showtime: 8:00 pm)

Cost/Donation: \$35 per ticket

****Tickets must be purchased in advance. They will not be sold at the show.****

Where: Governors Comedy Club (90 Division Avenue, Levittown, NY)

Order Tickets

[Click here](#) for event information and to order tickets.

Interested in becoming an event sponsor?

[Click here](#) to see our sponsorship opportunities for comedy night.

Celebration of Survivorship 2024

****Event Details Coming Soon****



Become an event sponsor:

[Click here](#) to see our sponsorship opportunities and the included benefits.

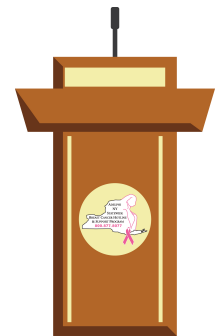
Reserve space in our digital journal:

[Click here](#) to reserve your ad space in our digital journal.

- **Full Page** (5.5"w x 8.5"h) **\$200.00**
(Educational Forums)
 - **Half Page** (5.5"w x 4.25"h) **\$100.00**
(One hour session with a social worker (English or Spanish))
 - **Quarter Page** (2.75"w x 4.25"h) **\$50.00**
(Food card for an underserved breast cancer patient)
 - **Listing in Journal** **\$25.00**
(Gift card for an underserved woman at the completion of her mammogram)
-

Upcoming Forums

Patient Navigation and Support During a Breast Cancer Diagnosis



Date: Monday, June 3, 2024

Time: 12:00 pm - 1:00 pm

Place: Zoom

[Click Here](#) to register

ABOUT THIS FORUM:

Join the Adelphi NY Statewide Breast Cancer Hotline & Support Program in collaboration with Northwell Health Cancer Institute and Friedman Center for Breast

and Lymphatic Surgery for an educational forum on **Patient Navigation and Support During a Breast Cancer Diagnosis**. Hear from our expert panel about how your breast surgeon, patient navigators, and social workers can help support you throughout a breast cancer diagnosis. Learn critical information about empowering yourself and loved ones.



SPEAKERS - [Click Here](#) to read their bios



Susan M. Palleschi, MD, FACS
Director, Breast Surgery, Glen Cove Hospital
Division of Breast Surgery
Northwell Health Physician Partners



Jacqueline Barber RN, CBCN
Breast Nurse Navigator
Cancer Care Navigation
Northwell Health Cancer Institute



Elizabeth Dowling RN, BSN
Breast Nurse Navigator
Cancer Care Navigation
Northwell Health Cancer Institute

[Click Here](#) for more information and to register for this forum.

**Once registered you will receive a confirmation email which includes the zoom link.*



[Click here](#) to register

Creativity Through a Zen Mindset

Join us in person at Adelphi University on a creative adventure. Participants will learn ways to achieve a “zen mindset”. Throughout this forum, we will be completing several activities promoting calmness, simplicity, and self-growth influenced by Japanese culture. We will be working with a variety of different techniques and mediums. Participants will also experience a guided zen meditation. All levels are welcome to join and we invite you to let go, relax and create your individual masterpiece.

****Space is limited to 50 participants****

Art supplies will be provided for all exercises.

Registration is required to attend this forum.

Date: Tuesday, July 16, 2024

Time: 10:00 am - 11:30 am

Place: Adelphi University, Garden City
(*details will be provided upon registration*)

[Click here](#) for more information and to register for this forum

If you have missed any of our past forums, please visit our [YouTube](#) channel to watch the videos.

Our forums are sponsored by
The Junior Coalition of the Manhasset Women's Coalition Against Breast Cancer, and
Northwell Health Cancer Institute.

The Warriors Book Club Meetings



Participation in our **Warriors Book Club** will provide you with a wonderful, feel-good, laugh out loud and uplifting experience! The purpose of the Warriors Book Club is to support people in the community impacted by Breast Cancer.

Monday, June 17, 2024

Join us on zoom from 7:00 pm - 8:00 pm

The book we will be discussing on June 17th is:

[The Lost Bookshop](#) by Evie Woods



The Echo of Old Books meets The Lost Apothecary in this evocative and charming novel full of mystery and secrets.

'The thing about books,' she said 'is that they help you to imagine a life bigger and better than you could ever dream of.'

On a quiet street in Dublin, a lost bookshop is waiting to be found...

For too long, Opaline, Martha and Henry have been the side characters in their own lives.

But when a vanishing bookshop casts its spell, these three unsuspecting strangers will discover that their own stories are every bit as extraordinary as the ones found in the pages of their beloved books. And by unlocking the secrets of the shelves, they find themselves transported to a world of wonder... where nothing is as it seems.

REGISTRATION: For more information and to register for our **June 17, 2024** Warriors Book Club Meeting on zoom, please contact Nina Foley, LCSW at **516-877-4315** or email nfoley@adelphi.edu.

Support Groups



Online Support Groups

[Click here](#) to see our support group schedule.

To participate in one of the listed support groups please call our Hotline at **800.877.8077** or email breastcancerhotline@adelphi.edu to pre-register. **All groups are free but registration is required. All groups are facilitated by a licensed social worker.**

All groups are facilitated by a licensed social worker of the Adelphi Breast Cancer Program. These programs are supported by grants from the Alpern Family Foundation, Kat's Ribbon of Hope, Marilyn Lichtman Foundation, the Mother Cabrini Health Foundation, New York State and Pink Aid.

NEWLY DIAGNOSED (Now Forming)

Women who are recently diagnosed with breast cancer (within the past 18-months) will have the opportunity to meet with others and receive support.

For more information and to register, call Nina Foley, LCSW (516) 877-4315.

RECURRENCE SUPPORT GROUP

Women who have experienced a recurrence with breast cancer will have the opportunity to meet with others and receive support.

For more information and to register, call Nina Foley, LCSW (516) 877-4315.

UNDER 40, YOUNG WOMEN'S GROUP

Women under the age of 40 who are diagnosed with breast cancer have specific needs. This support group will focus on those concerns while allowing the members to share their feelings in a safe supportive environment.

For more information and to register, call Nina Foley, LCSW (516) 877-4315.

SUPPORT FOR STAGE 4 BREAST CANCER

Men and women with Stage 4 Metastatic Breast Cancer are welcome to join an ongoing twice-monthly group on Zoom to share information, feelings, hopes and coping strategies.

For more information and to register, call Lois Goetz, LMSW, ACSW (516) 877-4347.

SUPPORT GROUPS FOR SPANISH SPEAKING WOMEN

[Cafecito](#)

Cafecito is a Spanish language support group for breast cancer survivors who are post-treatment.

Cafecito

Cafecito es un grupo de apoyo en español para sobrevivientes de cáncer del seno que han terminado su tratamiento de quimioterapia o radiación.

Call Angela M. Papalia, LMSW (516) 877-4329.

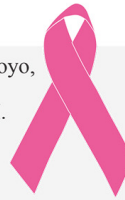
Llame a Angela M. Papalia, LMSW (516) 877-4329.

**ADELPHI NEW YORK STATEWIDE
BREAST CANCER HOTLINE & SUPPORT PROGRAM
800-877-8077**

***El Programa del Cáncer del Seno de Adelphi te invita a
CAFECITO***

El Adelphi Breast Cancer Program estará ofreciendo su grupo de apoyo, **CAFECITO**, para sobrevivientes del cáncer del seno en español. El grupo de 6 semanas es gratuito y tomará lugar a través de ZOOM.

Dirigido por una trabajadora social licenciada, cada sesión de **CAFECITO** cubrirá temas relacionados con su supervivencia. Temas como su seguimiento, los cambios en su cuerpo, la intimidad y las complejidades de la vida después del cáncer serán exploradas.



No estás sola.

Para más información o para inscribirse,
por favor de comunicarse con
Angela Papalia, LMSW
al **516-877-4329** o por correo electrónico a
apapalia@adelphi.edu

breast-cancer.adelphi.edu



Para Nuestro Bienestar

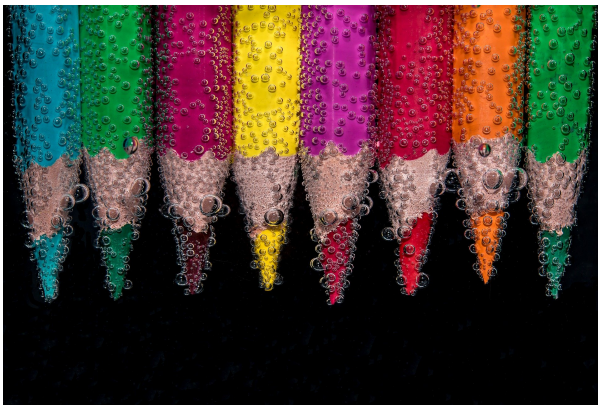
Para Nuestro Bienestar is a Spanish language support group for women who are newly diagnosed (within the last 18 months) to meet with others and receive support.

Para Nuestro Bienestar

Para Nuestro Bienestar es un grupo de apoyo en español para mujeres recién diagnosticadas con cáncer de mama (en los últimos 18 meses) para conocer a otras y recibir apoyo.

Call Angela M. Papalia, LMSW (516) 877-4329.
Llame a Angela M. Papalia, LMSW (516) 877-4329.

ONLINE CREATIVE ARTS WORKSHOPS



Our (4) week creative arts workshops empower participants to express themselves using art. This therapeutic program offers a safe place to communicate your thoughts, feelings, concerns, problems, hopes and dreams. Our professional staff guides you through different exercises and discussions helping you to find ways to gain personal insight and develop new coping skills.

For information on future workshops, please call **Angela M. Papalia, LMSW at (516) 877-4329** or email [**apapalia@adelphi.edu**](mailto:apapalia@adelphi.edu).

Our creative arts workshops are facilitated by **Angela M. Papalia, LMSW**, Assistant Director for the Adelphi Breast Cancer Program along with **Kimberly Newman, BFA**, Communications and Marketing Coordinator for the Adelphi Breast Cancer Program.

News and Press Releases

Program Highlights

IN THE NEWS

Meet Garden City Resident - Danielle Lalehzar

In 2020, Danielle went through treatment for breast cancer. Danielle discovered the Adelphi NY Statewide Breast Cancer Hotline & Support Program, which connected her with someone to talk to. Angela Papalia, the assistant director of the hotline, was an angel for Danielle and an extremely valuable resource in the community.

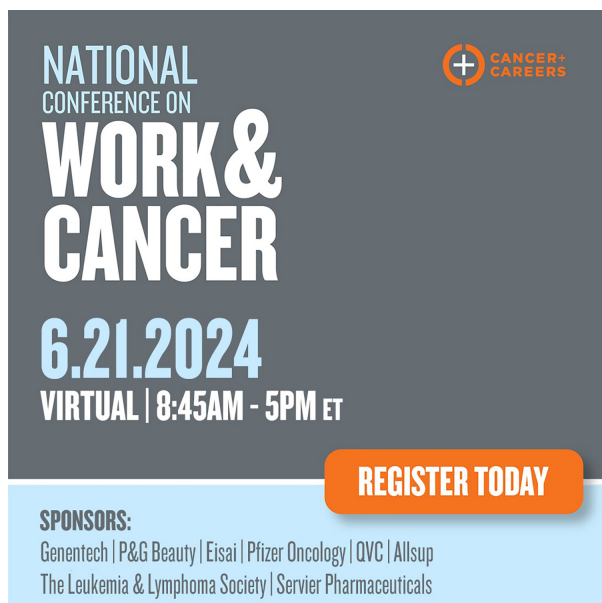
[Click here](#) to read the press release



READ MORE

Cancer & Careers

14th Annual National Conference on Work & Cancer



NATIONAL
CONFERENCE ON
**WORK &
CANCER**

6.21.2024
VIRTUAL | 8:45AM - 5PM ET

REGISTER TODAY

SPONSORS:
Genentech | P&G Beauty | Eisai | Pfizer Oncology | QVC | Allsup
The Leukemia & Lymphoma Society | Servier Pharmaceuticals

The **Adelphi NY Statewide Breast Cancer Hotline & Support Program** is pleased to partner with Cancer and Careers on the **14th annual National Conference on Work & Cancer**, being held virtually on Friday, June 21st!

This FREE virtual event will explore the complexities working people face as they balance their cancer treatment and recovery with employment. Topics include balancing treatment and work, disclosure decisions, engaging HR, nutrition, managing stress and more. CEs/PDCs available. For more details or to register, please visit www.cancerandcareers.org/conference.

Support the Adelphi Breast Cancer Program



DO YOU LIKE A CHALLENGE?

There are so many different ways you can help support, boost awareness, and raise funds for the **Adelphi NY Statewide Breast Cancer Hotline & Support Program**. Get ready to create your very own **FUN**draiser!

Thank you to everyone who has supported us with facebook fundraisers, drive-in movie and exercise events. The annual "power of pink" jewelry collection, pink pumpkins, pink patch and halloween fundraisers have proven successful.

Your fundraising efforts allow us to provide outreach at community health fairs, host volunteer trainings, offer support groups, individual counseling, present educational forums and refer women to free or low-cost mammography screening.

Click here to **[START YOUR FUNDRAISER](#)** and fill out the form. We will share your fundraiser over social media, our website and in our monthly newsletter. We want to help you have a successful campaign!

DONATE

[Click here](#) to help support the **Adelphi Breast Cancer Program**. Without funding, our program will no longer be able to provide life-saving services to those who are truly in need. Please make a tax-deductible donation today, so that we may be there for the breast cancer community.

**The Adelphi Breast Cancer Program
wishes our volunteers
the happiest of birthdays!**



Let's Stay In Touch

Contact our Hotline, Visit our Website, Follow us on Social Media

Follow us on Social Media and online to see photos of our wonderful volunteers at our outreach events, stay up-to-date on programs, forums and support groups. Read news articles and new studies on breast cancer, read inspiring stories from our volunteers, watch our events live on facebook and see the wonderful people and businesses that support us.

SOCIAL MEDIA

[facebook](#), [twitter](#), [pinterest](#), [youtube](#), [instagram](#)

WEBSITE

breast-cancer.adelphi.edu

HOTLINE

800.877.8077 - We are here for you 365 days a year!



Thank you to all our sponsors

(Listed below in alphabetical order)

Alpern Family Foundation Inc.

Kat's Ribbon of Hope

Manhasset Women's Coalition Against Breast Cancer

The Junior Coalition of the Manhasset Women's Coalition Against Breast Cancer

The Marilyn Lichtman Foundation

The Mother Cabrini Health Foundation

Nassau County Office for Housing and

Community Development

New York State

Northwell Health Cancer Institute

Pink Aid

Please visit our website at www.myorganization.com.
Donate to our cause at www.myorganization.com/donate.
