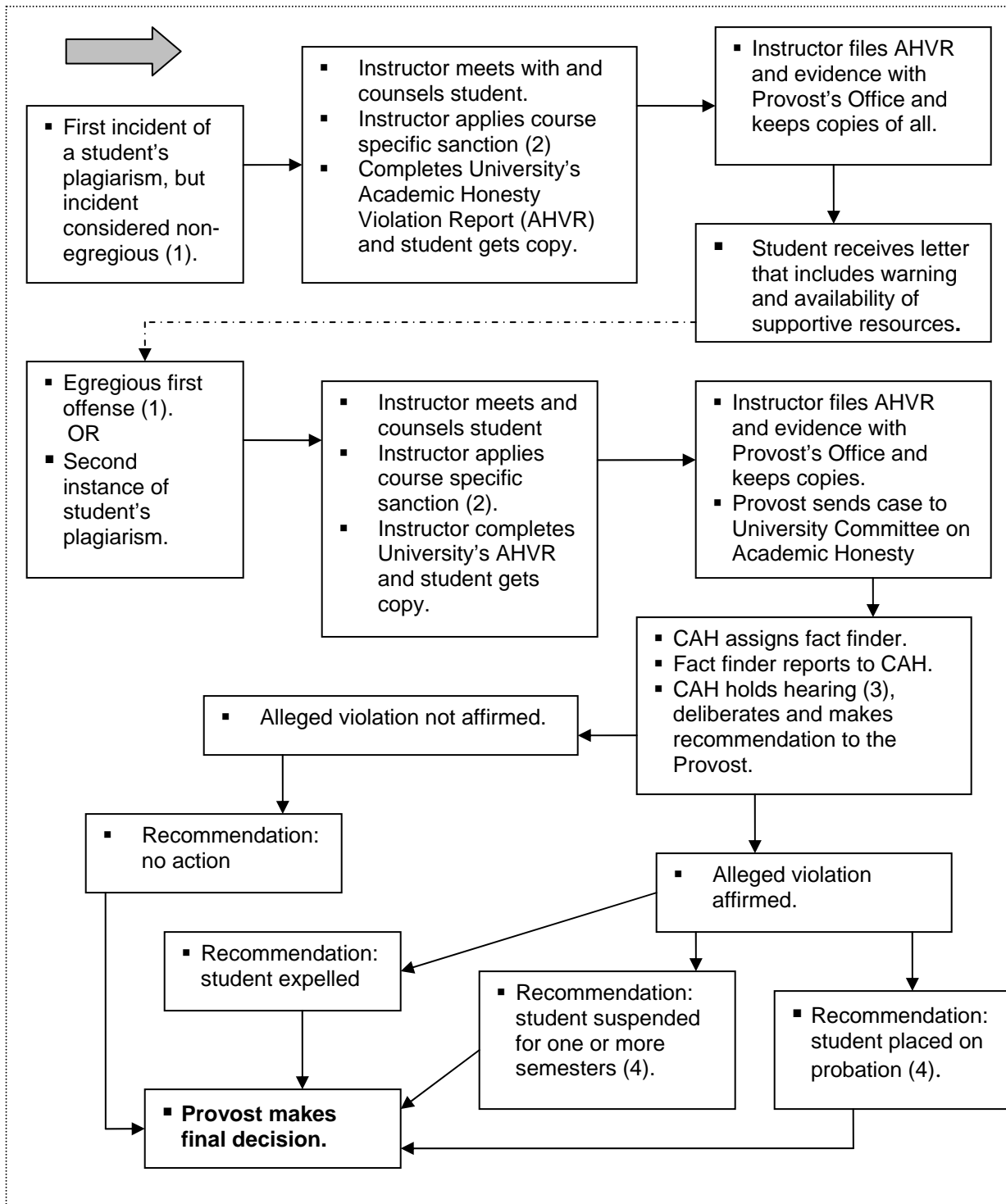


PROPOSED FLOW CHART UNDERGRADUATE CASE OF PLAGIARISM



1. Egregious may include but is not limited to: student buys paper, steals someone else's paper.
2. Sanctions may include but are not limited to: redo assignment, fails assignment, fails course.
3. Faculty member is invited to present and answer questions about the allegation. Student is invited to present his/her case and answer CAH members' questions.
4. Additional recommendations may include receiving counseling and/or other supportive services.